

SGSH Rabbit mAb (AR1554)

Key Features

Host Species:	Rabbit
Reactivity:	Human
Applications:	WB,IHC,IF,ICC
Isotype:	IgG,Kappa
MW:	57kD (Calculated) 57kD (Observed)

Recommended Dilution Ratios

WB:	1:1000-5000
IHC:	1100-300
ICC/IF:	1:100-300

Storage

-15°C to -25°C/1 year (Do not lower than -25°C)

Basic Information

Clonality	Monoclonal
-----------	------------

Immunogen Information

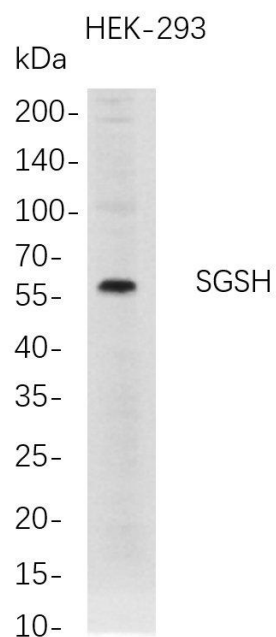
Specificity	Endogenous
-------------	------------

Target Information

Gene name	SGSH; HSS
Protein Name	N-sulphoglucosamine sulphohydrolase; Sulfoglucosamine sulfamidase; Sulphamidase

	Organism	Gene ID	UniProt ID
	Human	6448	P51688
Cellular Localization	Lysosome		

Validation Data



Western Blot analysis of HEK-293 whole cell lysates were separated by 4-20% SDS-PAGE, and the membrane was blotted with anti-SGSH rabbit mAb. The HRP-conjugated Goat anti-Rabbit IgG(H + L) antibody was used to detect the antibody.

Lane 1: HEK-293

Predicted band size: 57kDa

Observed band size: 57kDa

For Research Use Only