

SLFN12 Rabbit mAb (AR1555)

Key Features

Host Species:	Rabbit
Reactivity:	Human
Applications:	WB,Flow Cyt
Isotype:	IgG,Kappa
MW:	67kD (Calculated) 67kD (Observed)

Recommended Dilution Ratios

WB:	1:1000-5000
FC:	1:100-300

Storage

-15°C to -25°C/1 year (Do not lower than -25°C)

Basic Information

Clonality	Monoclonal
-----------	------------

Immunogen Information

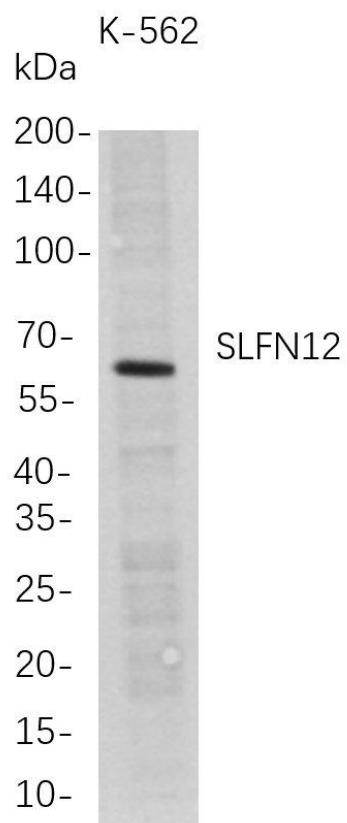
Specificity	Endogenous
-------------	------------

Target Information

Gene name	SLFN12
Protein Name	Ribonuclease SLFN12; Schlafen family member 12

	Organism	Gene ID	UniProt ID
	Human	55106	Q8IYM2
Cellular Localization	Nucleus. Cytoplasm, cytosol.		

Validation Data



Western Blot analysis of K-562 whole cell lysates were separated by 4-20% SDS-PAGE, and the membrane was blotted with anti-SLFN12 rabbit mAb. The HRP-conjugated Goat anti-Rabbit IgG(H + L) antibody was used to detect the antibody.

Lane 1: K-562

Predicted band size: 67kDa

Observed band size: 67kDa

For Research Use Only