

Smad5 Rabbit mAb (AR1558)

Key Features

Host Species:	Rabbit
Reactivity:	Human, Mouse, Rat
Applications:	WB, IHC, IF, IP, ELISA
Isotype:	IgG, Kappa
MW:	52kD (Calculated) 55kD (Observed)

Recommended Dilution Ratios

IHC:	1:200-1000
WB:	1:2000-10000
IF:	1:200-1000
ELISA:	1:5000-20000
IP:	1:50-200

Storage

-15°C to -25°C/1 year (Do not lower than -25°C)

Basic Information

Clonality	Monoclonal
-----------	------------

Immunogen Information

Specificity	Endogenous
-------------	------------

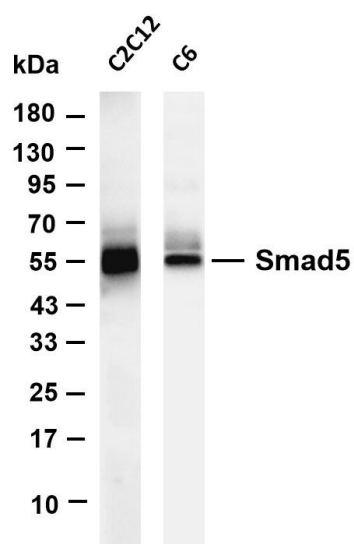
Target Information

Gene name	SMAD5
Protein Name	Mothers against decapentaplegic homolog 5

Organism	Gene ID	UniProt ID
Human	4090	Q99717
Mouse		P97454
Rat	59328	Q9R1V3

Cellular Localization	Cytoplasm, Nucleus
Tissue specificity	Ubiquitous.

Validation Data



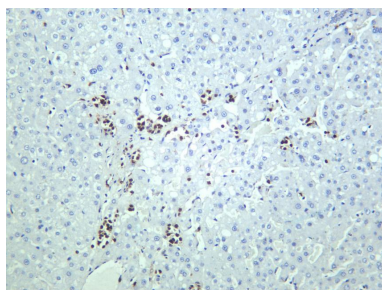
Various whole cell lysates were separated by 4-20% SDS-PAGE, and the membrane was blotted with anti-Smad5 antibody. The HRP-conjugated Goat anti-Rabbit IgG(H + L) antibody was used to detect the antibody.

Lane 1: C2C12

Lane 2: C6

Predicted band size: 52kDa

Observed band size: 55kDa



Human liver was stained with anti-Smad5 rabbit antibody

For Research Use Only