

SOX10 Rabbit mAb (AR1559)

Key Features

Host Species:	Rabbit
Reactivity:	Human, Mouse, Rat
Applications:	WB, IHC, IF, IP, ELISA
Isotype:	IgG, Kappa
MW:	50kD (Calculated) 62kD (Observed)

Recommended Dilution Ratios

IHC:	1:1000-4000
WB:	1:2000-10000
IF:	1:200-1000
ELISA:	1:5000-20000
IP:	1:50-200

Storage

-15°C to -25°C/1 year (Do not lower than -25°C)

Basic Information

Clonality	Monoclonal
-----------	------------

Immunogen Information

Specificity	Endogenous
-------------	------------

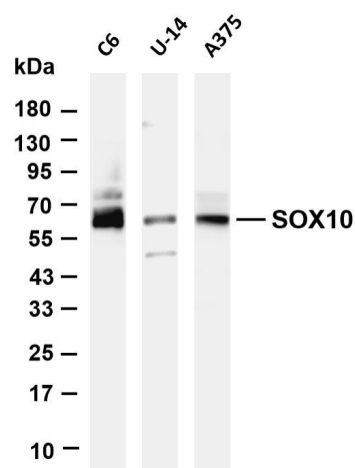
Target Information

Gene name	SOX10
Protein Name	Transcription factor SOX-10

Organism	Gene ID	UniProt ID
Human	6663	P56693
Mouse		Q04888
Rat		O55170

Cellular Localization	Cytoplasm, Nucleus
Tissue specificity	Expressed in fetal brain and in adult brain, heart, small intestine and colon.

Validation Data



Various whole cell lysates were separated by 4-20% SDS-PAGE, and the membrane was blotted with anti-SOX10 antibody. The HRP-conjugated Goat anti-Rabbit IgG(H + L) antibody was used to detect the antibody.

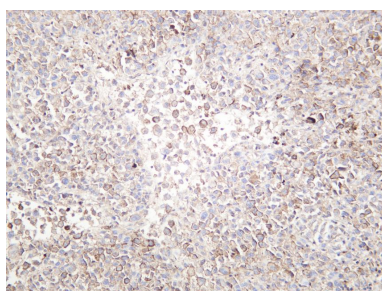
Lane 1: C6

Lane 2: U-14

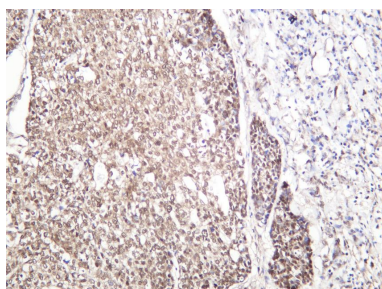
Lane 3: A375

Predicted band size: 50kDa

Observed band size: 62kDa



Human melanoma was stained with anti-SOX10 rabbit antibody



Human breast carcinoma was stained with anti-SOX10 rabbit antibody

For Research Use Only