

SPAM1 Rabbit mAb (AR1560)

Key Features

Host Species:	Rabbit
Reactivity:	Human
Applications:	WB,IHC
Isotype:	IgG,Kappa
MW:	58kD (Calculated) 65kD (Observed)

Recommended Dilution Ratios

IHC:	1:100-300
WB:	1:1000-5000

Storage

-15°C to -25°C/1 year (Do not lower than -25°C)

Basic Information

Clonality	Monoclonal
-----------	------------

Immunogen Information

Specificity	Endogenous
-------------	------------

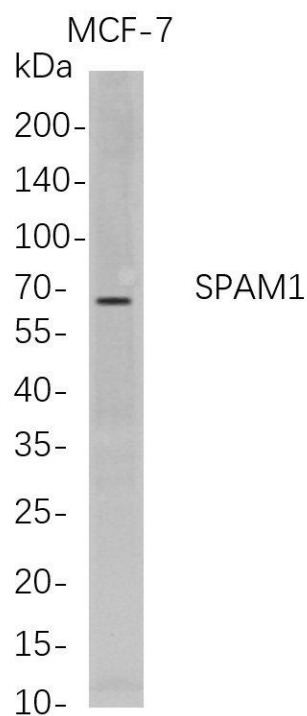
Target Information

Gene name	SPAM1; HYAL3; PH20
Protein Name	Hyaluronidase PH-20; Hyal-PH20; Hyaluronoglucosaminidase PH-20; Sperm adhesion molecule 1; Sperm surface protein PH-20

Organism	Gene ID	UniProt ID
Human	6677	P38567
Mouse	20690	P48794
Rat	117037	Q62803

Cellular Localization	Cell membrane; Lipid-anchor, GPI-anchor.
Tissue specificity	Testis.

Validation Data



Western Blot analysis of MCF-7 whole cell lysates were separated by 4-20% SDS-PAGE, and the membrane was blotted with anti-SPAM1 rabbit mAb. The HRP-conjugated Goat anti-Rabbit IgG(H + L) antibody was used to detect the antibody.

Lane 1: MCF-7

Predicted band size: 58kDa

Observed band size: 65kDa

For Research Use Only