

## SRP72 Rabbit mAb (AR1561)

### Key Features

Host Species:	Rabbit
Reactivity:	Human
Applications:	WB,IHC,IF,ICC,Flow Cyt
Isotype:	IgG,Kappa
MW:	75kD (Calculated) 72kD (Observed)

### Recommended Dilution Ratios

IHC:	1:100-300
WB:	1:1000-5000
ICC/IF:	1:100-300
FC:	1:100-300

### Storage

-15°C to -25°C/1 year (Do not lower than -25°C)

### Basic Information

Clonality	Monoclonal
-----------	------------

### Immunogen Information

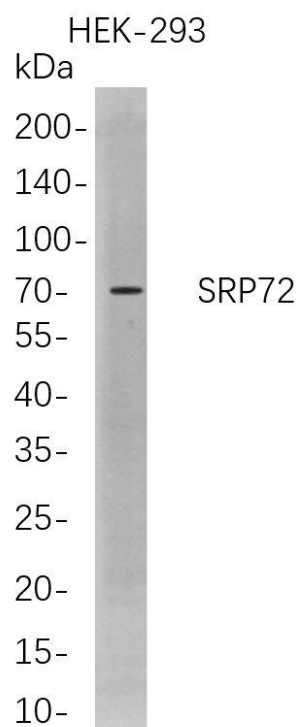
Specificity	Endogenous
-------------	------------

### Target Information

Gene name	SRP72
Protein Name	Signal recognition particle subunit SRP72; SRP72; Signal recognition particle 72kDa protein

	Organism	Gene ID	UniProt ID
	Human	6731	O76094
Cellular Localization	Cytoplasm. Endoplasmic reticulum.		

## Validation Data



Western Blot analysis of HEK-293 whole cell lysates were separated by 4-20% SDS-PAGE, and the membrane was blotted with anti-SRP72 rabbit mAb. The HRP-conjugated Goat anti-Rabbit IgG(H + L) antibody was used to detect the antibody.

Lane 1: HEK-293

Predicted band size: 75kDa

Observed band size: 72kDa

For Research Use Only