

STAT5A Rabbit mAb (AR1564)

Key Features

Host Species:	Rabbit
Reactivity:	Human, Mouse, Rat
Applications:	WB, IHC, IF, IP, ELISA
Isotype:	IgG, Kappa
MW:	91kD (Calculated) 91kD (Observed)

Recommended Dilution Ratios

IHC:	1:200-1000
WB:	1:2000-10000
IF:	1:200-1000
ELISA:	1:5000-20000
IP:	1:50-200

Storage

-15°C to -25°C/1 year (Do not lower than -25°C)

Basic Information

Clonality	Monoclonal
-----------	------------

Immunogen Information

Specificity	Endogenous
-------------	------------

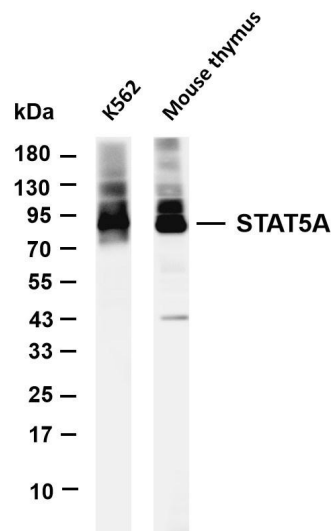
Target Information

Gene name	STAT5A
Protein Name	Signal transducer and activator of transcription 5A

Organism	Gene ID	UniProt ID
Human	6776	P42229
Mouse	20850	P42230
Rat	24918	Q62771

Cellular Localization	Cytoplasm, Nucleus
Tissue specificity	Brain, Cervix, Epithelium, Lung, Placenta, Synovial membrane

Validation Data



Various whole cell lysates were separated by 4-20% SDS-PAGE, and the membrane was blotted with anti-STAT5A antibody. The HRP-conjugated Goat anti-Rabbit IgG(H + L) antibody was used to detect the antibody.

Lane 1: K562

Lane 2: Mouse thymus

Predicted band size: 91kDa

Observed band size: 91kDa

For Research Use Only