

STAT5b Rabbit mAb (AR1565)

Key Features

Host Species:	Rabbit
Reactivity:	Human, Mouse, Rat
Applications:	WB, IHC, IF, IP, ELISA
Isotype:	IgG, Kappa
MW:	90kD (Calculated) 90kD (Observed)

Recommended Dilution Ratios

IHC:	1:1000-5000
WB:	1:2000-10000
IF:	1:200-1000
ELISA:	1:5000-20000
IP:	1:50-200

Storage

-15°C to -25°C/1 year (Do not lower than -25°C)

Basic Information

Clonality	Monoclonal
-----------	------------

Immunogen Information

Specificity	Endogenous
-------------	------------

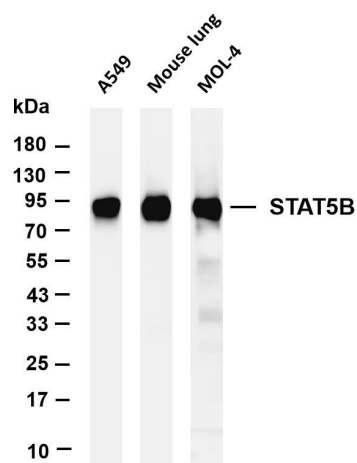
Target Information

Gene name	STAT5B
Protein Name	Stat5B

Organism	Gene ID	UniProt ID
Human	6777	P51692
Mouse	20851	P42232
Rat	25126	P52632

Cellular Localization	Cytoplasm, Nucleus
Tissue specificity	Brain, Epithelium, Lymph, Placenta

Validation Data



Various whole cell lysates were separated by 4-20% SDS-PAGE, and the membrane was blotted with anti-STAT5B antibody. The HRP-conjugated Goat anti-Rabbit IgG(H + L) antibody was used to detect the antibody.

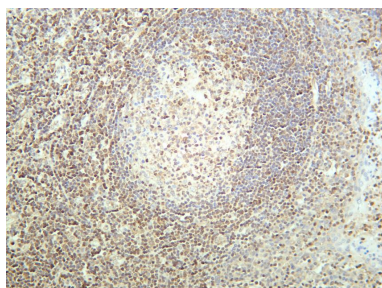
Lane 1: A549

Lane 2: Mouse lung

Lane 3: MOL-4

Predicted band size: 90kDa

Observed band size: 90kDa



Human tonsil was stained with anti-STAT5B rabbit antibody

For Research Use Only