

## STAT6 Rabbit mAb (AR1566)

### Key Features

Host Species:	Rabbit
Reactivity:	Human, Mouse, Rat
Applications:	WB, IHC, IF, IP, ELISA
Isotype:	IgG, Kappa
MW:	94kD (Calculated) 110kD (Observed)

### Recommended Dilution Ratios

IHC:	1:500-1000
WB:	1:2000-10000
IF:	1:200-1000
ELISA:	1:5000-20000
IP:	1:50-200

### Storage

-15°C to -25°C/1 year (Do not lower than -25°C)

### Basic Information

Clonality	Monoclonal
-----------	------------

### Immunogen Information

Specificity	Endogenous
-------------	------------

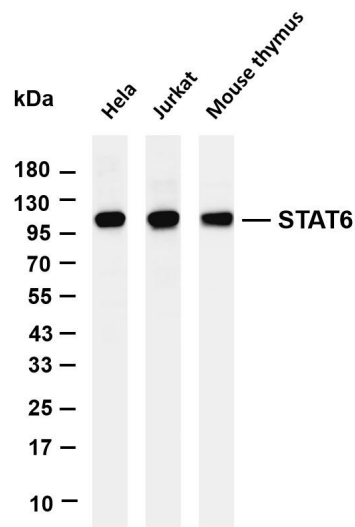
### Target Information

Gene name	STAT6
Protein Name	Signal transducer and activator of transcription 6

Organism	Gene ID	UniProt ID
Human	6778	P42226
Mouse	20852	P52633

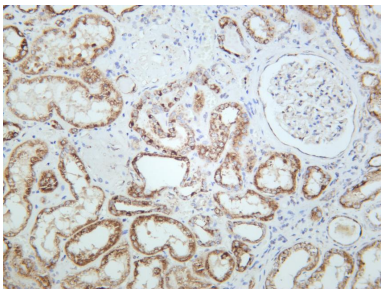
Cellular Localization	Nucleus
Tissue specificity	Uterus

Validation Data

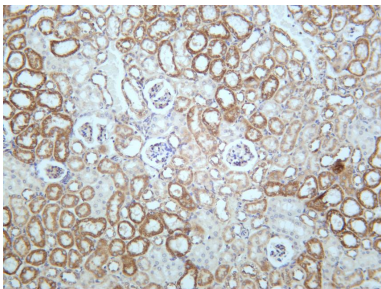


Various whole cell lysates were separated by 4-20% SDS-PAGE, and the membrane was blotted with anti-STAT6 antibody. The HRP-conjugated Goat anti-Rabbit IgG(H + L) antibody was used to detect the antibody.

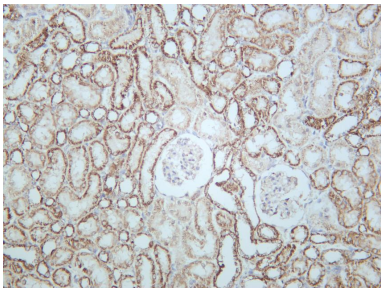
Lane 1: HeLa  
Lane 2: Jurkat  
Lane 3: Mouse thymus  
Predicted band size: 94kDa  
Observed band size: 110kDa



Human kidney was stained with anti-STAT6 rabbit antibody



Mouse kidney was stained with anti-STAT6 rabbit antibody



Rat kidney was stained with anti-STAT6 rabbit antibody

For Research Use Only