

Synuclein- α Rabbit mAb (AR1567)

Key Features

Host Species:	Rabbit
Reactivity:	Human, Mouse, Rat
Applications:	WB, IHC, IF, IP, ELISA
Isotype:	IgG, Kappa
MW:	14kD (Calculated) 18kD (Observed)

Recommended Dilution Ratios

IHC:	1:200-1000
WB:	1:2000-10000
IF:	1:200-1000
ELISA:	1:5000-20000
IP:	1:50-200

Storage

-15°C to -25°C/1 year (Do not lower than -25°C)

Basic Information

Clonality	Monoclonal
-----------	------------

Immunogen Information

Specificity	Endogenous
-------------	------------

Target Information

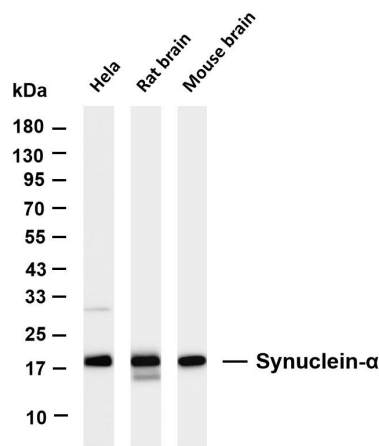
Gene name	SNCA
Protein Name	Alpha-synuclein

Organism	Gene ID	UniProt ID
Human	6622	P37840
Mouse	20617	O55042
Rat	29219	P37377

Cellular Localization	Cytoplasm. Membrane. Nucleus. Cell junction, synapse. Secreted. Cell projection, axon. Membrane-bound in dopaminergic neurons. Expressed and colocalized with SEPTIN4 in dopaminergic axon terminals, especially at the varicosities (By similarity).
-----------------------	-------------------------------------------------------------------------------------------------------------------------------------------------------------------------------------------------------------------------------------------------------

Tissue specificity

Validation Data



Highly expressed in presynaptic terminals in the central nervous system. Expressed principally in brain.

Various whole cell lysates were separated by 4-20% SDS-PAGE, and the membrane was blotted with anti-Synuclein- α antibody. The HRP-conjugated Goat anti-Rabbit IgG(H + L) antibody was used to detect the antibody.

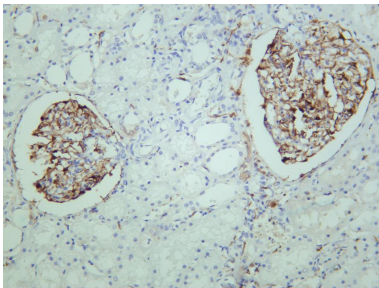
Lane 1: HeLa

Lane 2: Rat brain

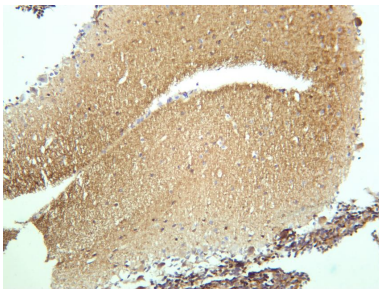
Lane 3: Mouse brain

Predicted band size: 14kDa

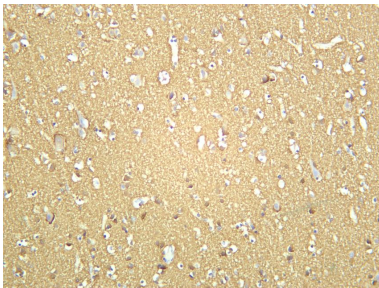
Observed band size: 18kDa



Human kidney was stained with anti-Synuclein- α rabbit antibody



Mouse brain was stained with anti-Synuclein- α rabbit antibody



Human brain was stained with anti-Synuclein- α rabbit antibody