

## Tau Rabbit mAb (AR1570)

### Key Features

Host Species:	Rabbit
Reactivity:	Human, Mouse, Rat
Applications:	WB, IHC, IF, IP, ELISA
Isotype:	IgG, Kappa
MW:	79kD (Calculated) 50-80kD (Observed)

### Recommended Dilution Ratios

IHC:	1:200-1000
WB:	1:2000-5000
IF:	1:200-1000
ELISA:	1:5000-20000
IP:	1:50-200

### Storage

-15°C to -25°C/1 year (Do not lower than -25°C)

### Basic Information

Clonality	Monoclonal
-----------	------------

### Immunogen Information

Specificity	Endogenous
-------------	------------

### Target Information

Gene name	MAPT
Protein Name	Microtubule-associated protein tau (Neurofibrillary tangle protein) (Paired helical filament-tau)(PHF-tau)

Organism	Gene ID	UniProt ID
Human	4137	P10636
Mouse	17762	P10637
Rat		P19332

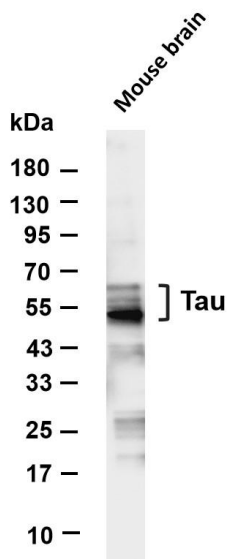
Cellular Localization	Cytoplasm, cytosol. Cell membrane; Peripheral membrane protein; Cytoplasmic side. Cytoplasm, cytoskeleton. Cell projection, axon. Cell projection, dendrite. Secreted. Mostly found in the axons of
-----------------------	---

neurons, in the cytosol and in association with plasma membrane components. Can be secreted; the secretion is dependent on protein unfolding and facilitated by the cargo receptor TMED10; it results in protein translocation from the cytoplasm into the ERGIC (endoplasmic reticulum-Golgi intermediate compartment) followed by vesicle entry and secretion.

Expressed in neurons. Isoform PNS-tau is expressed in the peripheral nervous system while the others are expressed in the central nervous system.

Tissue specificity

## Validation Data

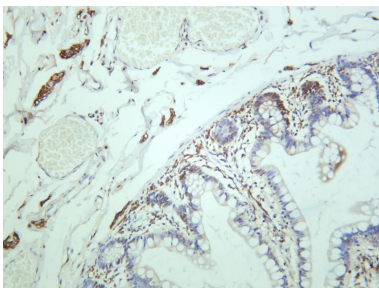


Various whole cell lysates were separated by 4-20% SDS-PAGE, and the membrane was blotted with anti-Tau antibody. The HRP-conjugated Goat anti-Rabbit IgG(H + L) antibody was used to detect the antibody.

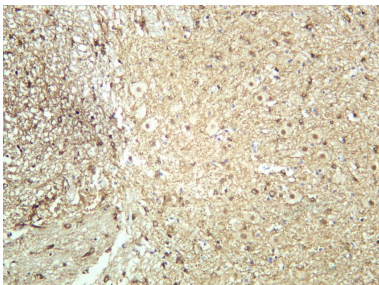
Lane 1: Mouse brain

Predicted band size: 79kDa

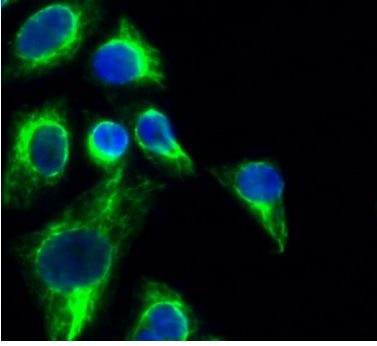
Observed band size: 50-80kDa



Human colon was stained with anti-Tau rabbit antibody



Mouse brain was stained with anti-Tau rabbit antibody



Immunofluorescence analysis of Hela cell.

1. Tau Monoclonal Antibody(green) was diluted at 1:200(4 ° overnight).
2. Goat Anti Rabbit Alexa Fluor 488 was diluted at 1:1000(room temperature, 50min).
3. DAPI (blue) 10min.

For Research Use Only