

TAF1C Rabbit mAb (AR1568)

Key Features

Host Species:	Rabbit
Reactivity:	Human
Applications:	WB,IP
Isotype:	IgG,Kappa
MW:	95kD (Calculated) 95kD (Observed)

Recommended Dilution Ratios

WB:	1:1000-5000
IP:	1:50-200

Storage

-15°C to -25°C/1 year (Do not lower than -25°C)

Basic Information

Clonality	Monoclonal
-----------	------------

Immunogen Information

Specificity	Endogenous
-------------	------------

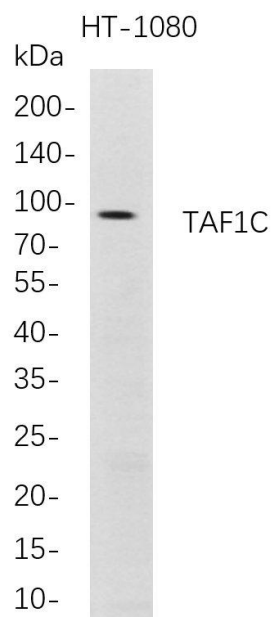
Target Information

Gene name	TAF1C
Protein Name	TATA box-binding protein-associated factor RNA polymerase I subunit C; RNA polymerase I specific TBP-associated factor 110 kDa; TAFI110; TATA box-binding protein-associated factor 1C; TBP-associated factor 1C; Transcription initiation factor SL1/TIF-IB subunit C

Organism	Gene ID	UniProt ID
Human	9013	Q15572
Mouse	21341	Q6PDZ2
Rat	361420	Q6P773

Cellular Localization	Nucleus, nucleolus.
-----------------------	---------------------

Validation Data



Western Blot analysis of HT-1080 whole cell lysates were separated by 4-20% SDS-PAGE, and the membrane was blotted with anti-TAF1C rabbit mAb. The HRP-conjugated Goat anti-Rabbit IgG(H + L) antibody was used to detect the antibody.

Lane 1: HT-1080

Predicted band size: 95kDa

Observed band size: 95kDa

For Research Use Only