

TBC1D4 Rabbit mAb (AR1571)

Key Features

Host Species:	Rabbit
Reactivity:	Human, Mouse
Applications:	WB, IF, IP, ELISA
Isotype:	IgG, Kappa
MW:	147kD (Calculated) 160kD (Observed)

Recommended Dilution Ratios

WB:	1:2000-10000
IF:	1:200-1000
ELISA:	1:5000-20000
IP:	1:50-200

Storage

-15°C to -25°C/1 year (Do not lower than -25°C)

Basic Information

Clonality	Monoclonal
-----------	------------

Immunogen Information

Specificity	Endogenous
-------------	------------

Target Information

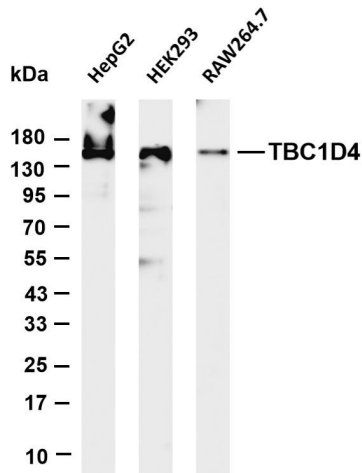
Gene name	TBC1D4
Protein Name	TBC1 domain family member 4

Organism	Gene ID	UniProt ID
Human	9882	O60343
Mouse	210789	Q8BYJ6

Cellular Localization	Cytoplasm
Tissue specificity	Widely expressed. Isoform 2 is the highest overexpressed in most tissues. Isoform 1 is highly expressed in skeletal muscle and heart, but was not detectable in the liver nor in adipose tissue. Isoform 2 is strongly expressed in adrenal and thyroid gland, and also in lung, kidney, colon, brain and adipose tissue. Isoform 2 is

moderately expressed in skeletal muscle. Expressed in pancreatic Langerhans islets, including beta cells (at protein level). Expression is decreased by twofold in pancreatic islets in type 2 diabetes patients compared to control subjects. Up-regulated in T-cells from patients with atopic dermatitis.

Validation Data



Various whole cell lysates were separated by 4-20% SDS-PAGE, and the membrane was blotted with anti-TBC1D4 antibody. The HRP-conjugated Goat anti-Rabbit IgG(H + L) antibody was used to detect the antibody.

Lane 1: HepG2

Lane 2: HEK293

Lane 3: RAW264.7

Predicted band size: 147kDa

Observed band size: 160kDa

For Research Use Only