

## TCF7 Rabbit mAb (AR1572)

### Key Features

Host Species:	Rabbit
Reactivity:	Human,Rat
Applications:	WB,IHC,IF,IP,ELISA
Isotype:	IgG,Kappa
MW:	42kD (Calculated) 60kD (Observed)

### Recommended Dilution Ratios

IHC:	1:1000-4000
WB:	1:2000-10000
IF:	1:200-1000
ELISA:	1:5000-20000
IP:	1:50-200

### Storage

-15°C to -25°C/1 year (Do not lower than -25°C)

### Basic Information

Clonality	Monoclonal
-----------	------------

### Immunogen Information

Specificity	Endogenous
-------------	------------

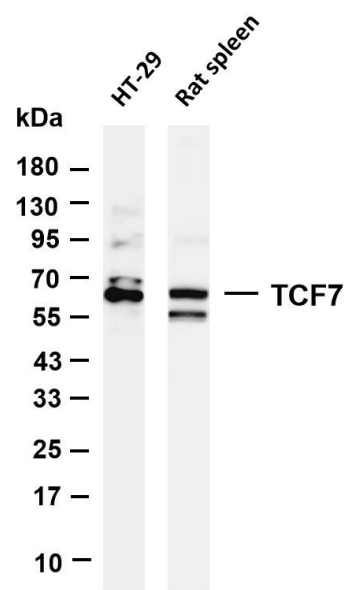
### Target Information

Gene name	TCF7
Protein Name	Transcription factor 7

Organism	Gene ID	UniProt ID
Human	6932	P36402
Mouse	21414	Q00417

Cellular Localization	Nucleus
Tissue specificity	Predominantly expressed in T-cells. Also detected in proliferating intestinal epithelial cells and in the basal epithelial cells of mammary gland epithelium.

Validation Data



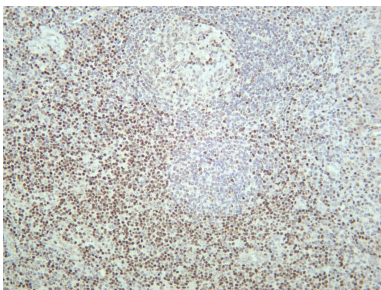
Various whole cell lysates were separated by 4-20% SDS-PAGE, and the membrane was blotted with anti-TCF7 antibody. The HRP-conjugated Goat anti-Rabbit IgG(H + L) antibody was used to detect the antibody.

Lane 1: HT-29

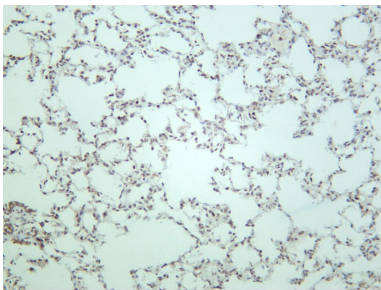
Lane 2: Rat spleen

Predicted band size: 42kDa

Observed band size: 60kDa



Human tonsil was stained with anti-TCF7 rabbit antibody



Rat lung was stained with anti-TCF7 rabbit antibody

For Research Use Only