

Thrombospondin 1 Rabbit mAb (AR1574)

Key Features

Host Species:	Rabbit
Reactivity:	Human, Mouse, Rat
Applications:	WB, IHC, IF, IP, ELISA
Isotype:	IgG, Kappa
MW:	129kD (Calculated) 170kD (Observed)

Recommended Dilution Ratios

IHC:	1:200-1000
WB:	1:2000-10000
IF:	1:200-1000
ELISA:	1:5000-20000
IP:	1:50-200

Storage

-15°C to -25°C/1 year (Do not lower than -25°C)

Basic Information

Clonality	Monoclonal
-----------	------------

Immunogen Information

Specificity	Endogenous
-------------	------------

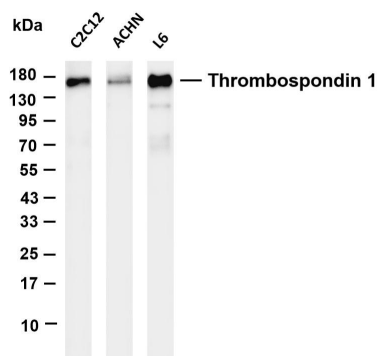
Target Information

Gene name	THBS1 TSP TSP1
Protein Name	Thrombospondin 1

Organism	Gene ID	UniProt ID
Human	7057	P07996

Cellular Localization	Secreted
Tissue specificity	Aorta endothelial cell, Endothelial cell, Liver, Plasma, Platelet, Saliva

Validation Data



Various whole cell lysates were separated by 4-20% SDS-PAGE, and the membrane was blotted with anti-Thrombospondin 1 antibody. The HRP conjugated Goat anti-Rabbit IgG(H + L) antibody was used to detect the antibody.

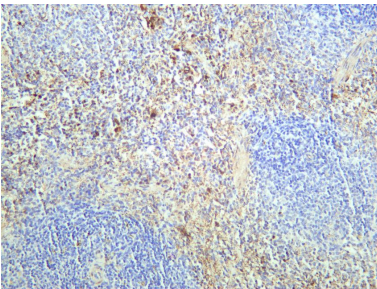
Lane 1: C2C12

Lane 2: ACHN

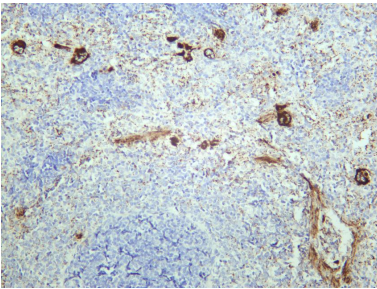
Lane 3: L6

Predicted band size: 129kDa

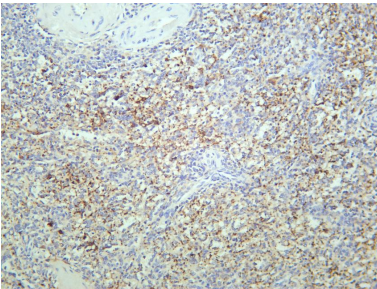
Observed band size: 170kDa



Mouse spleen was stained with anti-Thrombospondin 1 rabbit antibody



Rat spleen was stained with anti-Thrombospondin 1 rabbit antibody



Human spleen was stained with anti-Thrombospondin 1 rabbit antibody

For Research Use Only