

TMEM192 Rabbit mAb (AR1575)

Key Features

Host Species:	Rabbit
Reactivity:	Human
Applications:	WB,Flow Cyt
Isotype:	IgG,Kappa
MW:	31kD (Calculated) 31kD (Observed)

Recommended Dilution Ratios

WB:	1:1000-5000
FC:	1:100-300

Storage

-15°C to -25°C/1 year (Do not lower than -25°C)

Basic Information

Clonality	Monoclonal
-----------	------------

Immunogen Information

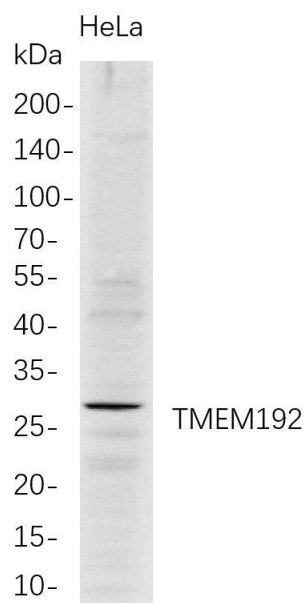
Specificity	Endogenous
-------------	------------

Target Information

Gene name	TMEM192
Protein Name	Transmembrane protein 192

	Organism	Gene ID	UniProt ID
	Human	201931	Q8IY95
	Mouse	73067	Q9CXT7
	Rat	361137	Q5U1Y0
Cellular Localization	Lysosome membrane; Multi-pass membrane protein. Late endosome.		
Tissue specificity	Strongly expressed in kidney, liver, lung and pancreas.		

Validation Data



Western Blot analysis of HeLa whole cell lysates were separated by 4-20% SDS-PAGE, and the membrane was blotted with anti-TMEM192 rabbit mAb. The HRP-conjugated Goat anti-Rabbit IgG(H + L) antibody was used to detect the antibody.

Lane 1: HeLa

Predicted band size: 31kDa

Observed band size: 31kDa

For Research Use Only