

TRAF6 Rabbit mAb (AR1576)

Key Features

Host Species:	Rabbit
Reactivity:	Human,Mouse,Rat
Applications:	WB,IHC,IF,IP,ELISA
Isotype:	IgG,Kappa
MW:	60kD (Calculated) 60kD (Observed)

Recommended Dilution Ratios

IHC:	1:100-500
WB:	1:2000-10000
IF:	1:200-1000
ELISA:	1:5000-20000
IP:	1:50-200

Storage

-15°C to -25°C/1 year (Do not lower than -25°C)

Basic Information

Clonality	Monoclonal
-----------	------------

Immunogen Information

Specificity	Endogenous
-------------	------------

Target Information

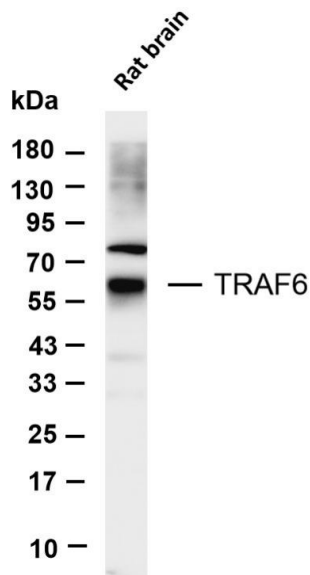
Gene name	TRAF6
Protein Name	TNF receptor-associated factor 6

Organism	Gene ID	UniProt ID
Human	7189	Q9Y4K3
Mouse	22034	P70196
Rat	311245	B5DF45

Cellular Localization	Cytoplasm. Cytoplasm, cell cortex. Nucleus. Lipid droplet. Found in the nuclei of some aggressive B-cell lymphoma cell lines as well as in the nuclei of both resting and activated T- and B-lymphocytes. Found in punctate nuclear body protein complexes. Ubiquitination
-----------------------	--

Tissue specificity

Validation Data



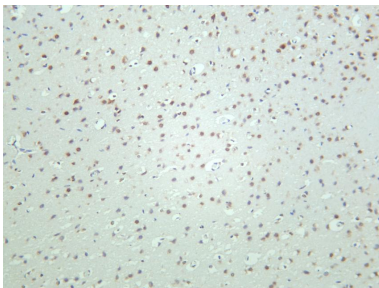
may occur in the cytoplasm and sumoylation in the nucleus. RSAD2/viperin recruits it to the lipid droplet (By similarity). Expressed in heart, brain, placenta, lung, liver, skeletal muscle, kidney and pancreas.

Various whole cell lysates were separated by 4-20% SDS-PAGE, and the membrane was blotted with anti-TRAF6 antibody. The HRP-conjugated Goat anti-Rabbit IgG(H + L) antibody was used to detect the antibody.

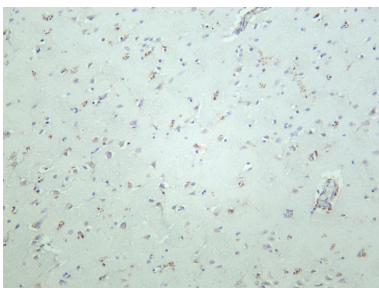
Lane 1: Rat brain

Predicted band size: 60kDa

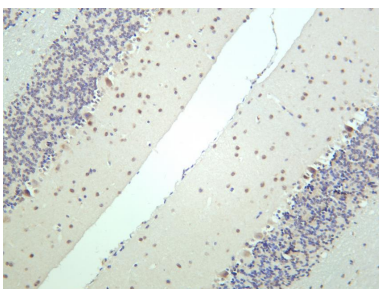
Observed band size: 60kDa



Rat brain was stained with anti-TRAF6 rabbit antibody



Human brain was stained with anti-TRAF6 rabbit antibody



Mouse brain was stained with anti-TRAF6 rabbit antibody