

Tuberin Rabbit mAb (AR1579)

Key Features

| | |
|---------------|--|
| Host Species: | Rabbit |
| Reactivity: | Human, Mouse, Rat |
| Applications: | WB, IHC, IF, IP, ELISA |
| Isotype: | IgG, Kappa |
| MW: | 201kD (Calculated) 201kD (Observed) |

Recommended Dilution Ratios

| | |
|--------|--------------|
| IHC: | 1:200-1000 |
| WB: | 1:2000-10000 |
| IF: | 1:200-1000 |
| ELISA: | 1:5000-20000 |
| IP: | 1:50-200 |

Storage

-15°C to -25°C/1 year (Do not lower than -25°C)

Basic Information

| | |
|-----------|------------|
| Clonality | Monoclonal |
|-----------|------------|

Immunogen Information

| | |
|-------------|------------|
| Specificity | Endogenous |
|-------------|------------|

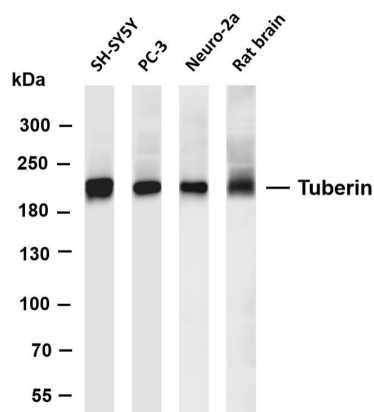
Target Information

| | |
|--------------|---------|
| Gene name | TSC2 |
| Protein Name | Tuberin |

| Organism | Gene ID | UniProt ID |
|----------|---------|------------|
| Human | 7249 | P49815 |
| Mouse | | Q61037 |
| Rat | 24855 | P49816 |

| | |
|-----------------------|--|
| Cellular Localization | Cytoplasm |
| Tissue specificity | Liver, brain, heart, lymphocytes, fibroblasts, biliary epithelium, pancreas, skeletal muscle, kidney, lung and placenta. |

Validation Data



Various whole cell lysates were separated by 4-8% SDS-PAGE, and the membrane was blotted with anti-Tuberin antibody. The HRP-conjugated Goat anti-Rabbit IgG(H + L) antibody was used to detect the antibody.

Lane 1: SHSY5Y

Lane 2: PC-3

Lane 3: Neuro-2a

Lane 4: Rat brain

Predicted band size: 201kDa

Observed band size: 201kDa

For Research Use Only