

ULK1 Rabbit mAb (AR1581)

Key Features

Host Species:	Rabbit
Reactivity:	Human, Mouse, Rat
Applications:	WB, IF, IP, ELISA
Isotype:	IgG, Kappa
MW:	113kD (Calculated) 130kD (Observed)

Recommended Dilution Ratios

WB:	1:2000-10000
IF:	1:200-1000
ELISA:	1:5000-20000
IP:	1:50-200

Storage

-15°C to -25°C/1 year (Do not lower than -25°C)

Basic Information

Clonality	Monoclonal
-----------	------------

Immunogen Information

Specificity	Endogenous
-------------	------------

Target Information

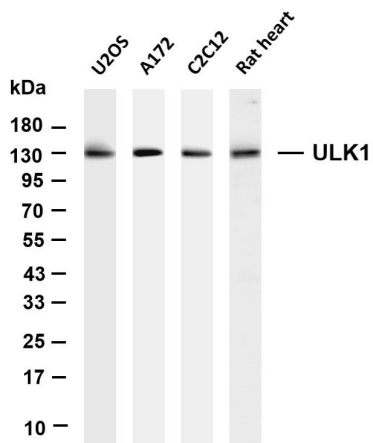
Gene name	ULK1
Protein Name	Serine/threonine-protein kinase ULK1

Organism	Gene ID	UniProt ID
Human	8408	O75385
Mouse	22241	O70405

Cellular Localization	Cytoplasm, cytosol. Preautophagosomal structure. Under starvation conditions, is localized to punctate structures primarily representing the isolation membrane that sequesters a portion of the cytoplasm resulting in the formation of an autophagosome.
Tissue specificity	Ubiquitously expressed. Detected in the following adult tissues: skeletal muscle, heart, pancreas, brain, placenta, liver, kidney, and

lung.

Validation Data



Various whole cell lysates were separated by 4-20% SDS-PAGE, and the membrane was blotted with anti-ULK1 antibody. The HRP-conjugated Goat anti-Rabbit IgG(H + L) antibody was used to detect the antibody.

Lane 1: U2OS

Lane 2: A172

Lane 3: C2C12

Lane 4: Rat heart

Predicted band size: 113kDa

Observed band size: 130kDa

For Research Use Only