

UPB1 Rabbit mAb (AR1582)

Key Features

Host Species:	Rabbit
Reactivity:	Human
Applications:	WB,IHC,IP
Isotype:	IgG,Kappa
MW:	43kD (Calculated) 39kD (Observed)

Recommended Dilution Ratios

IHC:	1:100-300
WB:	1:1000-5000
IP:	1:50-200

Storage

-15°C to -25°C/1 year (Do not lower than -25°C)

Basic Information

Clonality	Monoclonal
-----------	------------

Immunogen Information

Specificity	Endogenous
-------------	------------

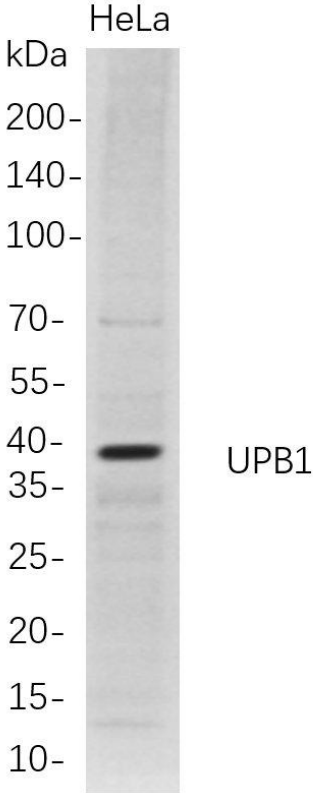
Target Information

Gene name	UPB1; BUP1
Protein Name	Beta-ureidopropionase; BUP-1; Beta-alanine synthase; N-carbamoyl-beta-alanine amidohydrolase

Organism	Gene ID	UniProt ID
Human	51733	Q9UBR1
Mouse	103149	Q8VC97
Rat	116593	Q03248

Cellular Localization	Cytoplasm.
Tissue specificity	Detected in liver (at protein level).

Validation Data



Western Blot analysis of HeLa whole cell lysates were separated by 4-20% SDS-PAGE, and the membrane was blotted with anti-UPB1 rabbit mAb. The HRP-conjugated Goat anti-Rabbit IgG(H + L) antibody was used to detect the antibody.

Lane 1: HeLa

Predicted band size: 43kDa

Observed band size: 39kDa

For Research Use Only