

VCAM1 Rabbit mAb (AR1583)

Key Features

Host Species:	Rabbit
Reactivity:	Human,Mouse,Rat
Applications:	WB,IHC,IF,IP,ELISA
Isotype:	IgG,Kappa
MW:	81kD (Calculated) 110kD (Observed)

Recommended Dilution Ratios

IHC:	1:500-1000
WB:	1:2000-10000
IF:	1:200-1000
ELISA:	1:5000-20000
IP:	1:50-200

Storage

-15°C to -25°C/1 year (Do not lower than -25°C)

Basic Information

Clonality	Monoclonal
-----------	------------

Immunogen Information

Specificity	Endogenous
-------------	------------

Target Information

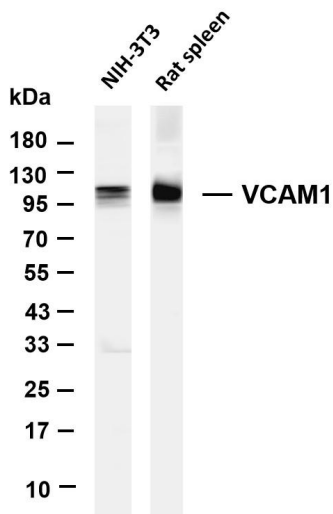
Gene name	VCAM1 L1CAM
Protein Name	VCAM1

Organism	Gene ID	UniProt ID
Human	7412	P19320
Mouse	22329	P29533
Rat	25361	P29534

Cellular Localization	Membrane; Single-pass type I membrane protein.
Tissue specificity	Expressed on inflamed vascular endothelium, as well as on macrophage-like and dendritic cell types in both normal and

inflamed tissue.

Validation Data



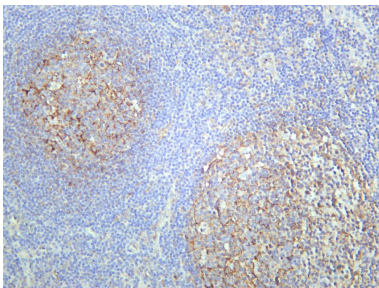
Various whole cell lysates were separated by 4-20% SDS-PAGE, and the membrane was blotted with anti-VCAM1 antibody. The HRP-conjugated Goat anti-Rabbit IgG(H + L) antibody was used to detect the antibody.

Lane 1: NIH-3T3

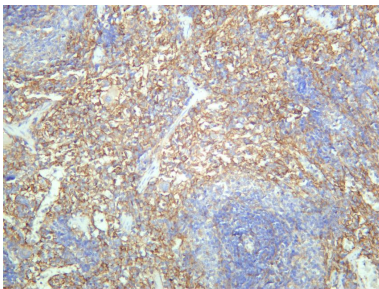
Lane 2: Rat spleen

Predicted band size: 81kDa

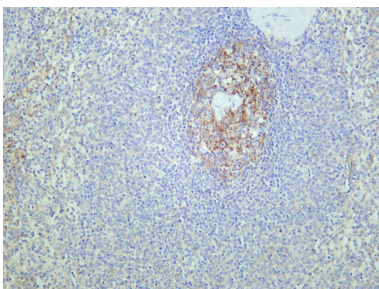
Observed band size: 110kDa



Human tonsil was stained with anti-VCAM1 rabbit antibody



Rat spleen was stained with anti-VCAM1 rabbit antibody



Human spleen was stained with anti-VCAM1 rabbit antibody

For Research Use Only