

Vinculin Rabbit mAb (AR1584)

Key Features

Host Species:	Rabbit
Reactivity:	Human, Mouse, Rat
Applications:	WB, IHC, IF, IP, ELISA
Isotype:	IgG, Kappa
MW:	124kD (Calculated) 124kD (Observed)

Recommended Dilution Ratios

IHC:	1:4000-20000
WB:	1:2000-10000
IF:	1:200-1000
ELISA:	1:5000-20000
IP:	1:50-200

Storage

-15°C to -25°C/1 year (Do not lower than -25°C)

Basic Information

Clonality	Monoclonal
-----------	------------

Immunogen Information

Specificity	Endogenous
-------------	------------

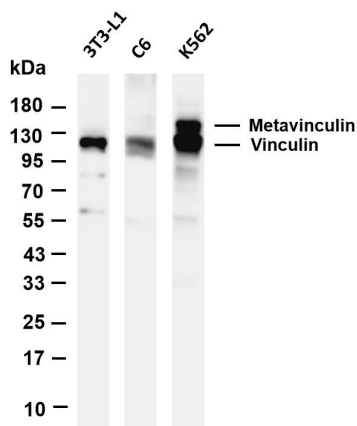
Target Information

Gene name	VCL
Protein Name	Vinculin

Organism	Gene ID	UniProt ID
Human	7414	P18206
Mouse	22330	Q64727
Rat	305679	P85972

Cellular Localization	Cytoplasm
Tissue specificity	Metavinculin is muscle-specific.

Validation Data



Various whole cell lysates were separated by 4-20% SDS-PAGE, and the membrane was blotted with anti-Vinculin antibody. The HRP-conjugated Goat anti-Rabbit IgG(H + L) antibody was used to detect the antibody.

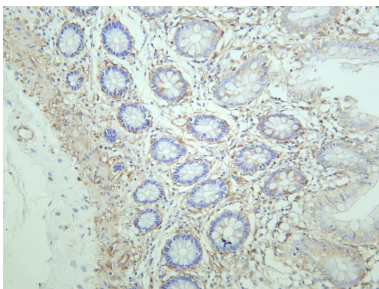
Lane 1: 3T3-L1

Lane 2: C6

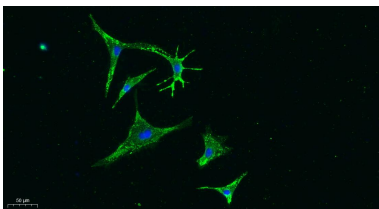
Lane 3: K562

Predicted band size: 124kDa

Observed band size: 124kDa



Human colon was stained with anti-Vinculin rabbit antibody



Immunofluorescence analysis of A549.

1. primary Antibody was diluted at 1:200(4°C overnight).
2. Goat Anti Rabbit IgG (H&L) - Alexa Fluor 488 Secondary antibody was diluted at 1:1000(room temperature, 50min).
3. DAPI (blue) 10min.

For Research Use Only