

ZO1 Rabbit mAb (AR1587)

Key Features

Host Species:	Rabbit
Reactivity:	Human, Mouse, Rat
Applications:	WB, IHC, IF, IP, ELISA
Isotype:	IgG, Kappa
MW:	195kD (Calculated) 220kD (Observed)

Recommended Dilution Ratios

IHC:	1:1000-4000
WB:	1:2000-10000
IF:	1:200-1000
ELISA:	1:5000-20000
IP:	1:50-200

Storage

-15°C to -25°C/1 year (Do not lower than -25°C)

Basic Information

Clonality	Monoclonal
-----------	------------

Immunogen Information

Specificity	Endogenous
-------------	------------

Target Information

Gene name	TJP1 ZO1
Protein Name	Tight junction protein ZO-1 (Tight junction protein 1) (Zona occludens protein 1) (Zonula occludens protein 1)

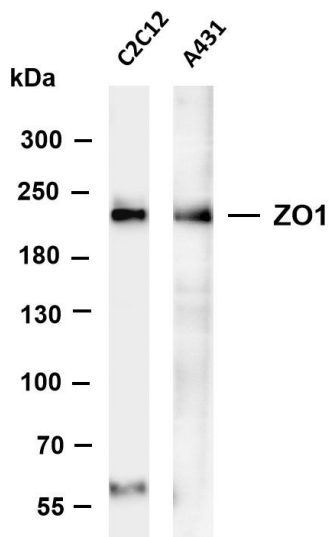
Organism	Gene ID	UniProt ID
Human	7082	Q07157
Mouse		P39447

Cellular Localization	Membrane
-----------------------	----------

Tissue specificity	The alpha-containing isoform is found in most epithelial cell junctions. The short isoform is found both in endothelial cells and the highly specialized epithelial junctions of renal glomeruli and
--------------------	--

Sertoli cells of the seminiferous tubules.

Validation Data



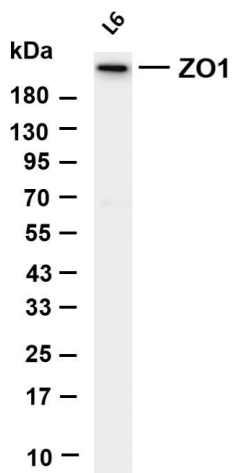
Various whole cell lysates were separated by 4-8% SDS-PAGE, and the membrane was blotted with anti-ZO1 antibody. The HRP-conjugated Goat anti-Rabbit IgG(H + L) antibody was used to detect the antibody.

Lane 1: C2C12

Lane 2: A431

Predicted band size: 195kDa

Observed band size: 220kDa

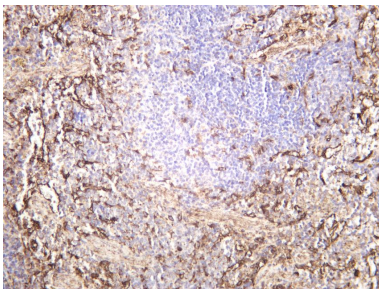


Various whole cell lysates were separated by 4-20% SDS-PAGE, and the membrane was blotted with anti-ZO1 antibody. The HRP-conjugated Goat anti-Rabbit IgG(H + L) antibody was used to detect the antibody.

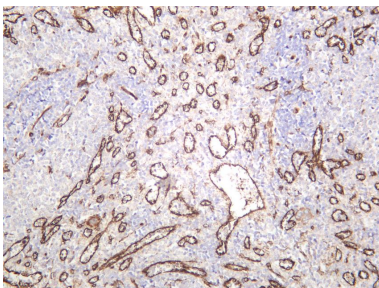
Lane 1: L6

Predicted band size: 195kDa

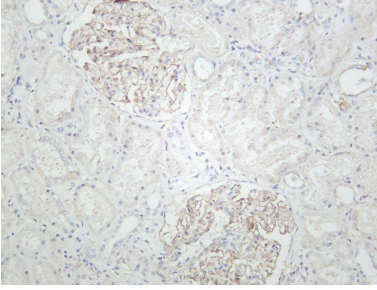
Observed band size: 220kDa



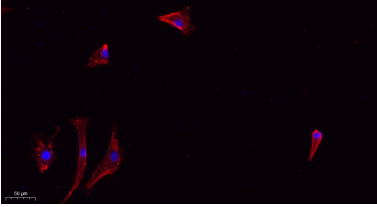
Mouse spleen was stained with anti-ZO1 rabbit antibody



Rat spleen was stained with anti-ZO1 rabbit antibody



Human kidney was stained with anti-ZO1 rabbit antibody



Immunofluorescence analysis of A549.

1. primary Antibody(red) was diluted at 1:200(4°C overnight).
2. Goat Anti Rabbit IgG (H&L) - Alexa Fluor 594 Secondary antibody was diluted at 1:1000(room temperature, 50min).
3. DAPI (blue) 10min.

For Research Use Only