

RPS6 (Phospho Ser240/Ser244)

Rabbit mAb (AR1590)

Key Features

Host Species:	Rabbit
Reactivity:	Human,Mouse,Rat
Applications:	WB,IHC,IF,IP,ELISA
Isotype:	IgG,Kappa
MW:	29kD (Calculated) 29kD (Observed)

Recommended Dilution Ratios

IHC:	1:1000-4000
WB:	1:2000-10000
IF:	1:200-1000
ELISA:	1:5000-20000
IP:	1:50-200

Storage -15°C to -25°C/1 year (Do not lower than -25°C)

Basic Information

Clonality Monoclonal

Immunogen Information

Specificity This antibody detects endogenous levels of Ribosomal Protein S6 only when phosphorylated at Ser240 or Ser244.

Target Information

Gene name RPS6
 Protein Name 40S ribosomal protein S6

Organism	Gene ID	UniProt ID
Human	6194	P62753
Mouse	20104	P62754
Rat	29304	P62755

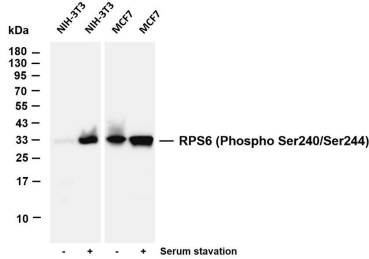
Cellular Localization nucleus, nucleoplasm, nucleolus, cytoplasm, cytosol, ribosome, polysome,

small ribosomal subunit, membrane, cytosolic small ribosomal subunit, dendrite, intracellular ribonucleoprotein complex, cytoplasmic ribonucleoprotein granula

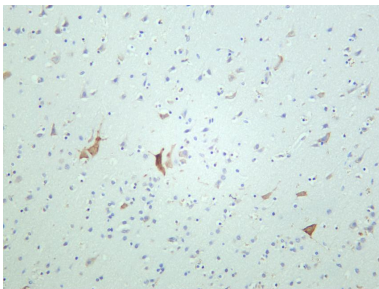
Brain, Colon, Colon adenocarcinoma, Epithelium, Muscle, Ovary, Pancreas, Placenta, Skin, Testis

Tissue specificity

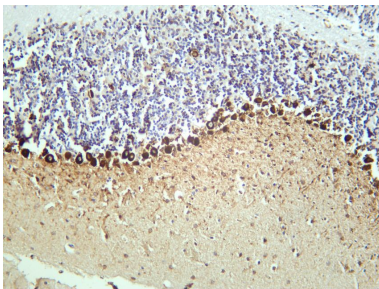
Validation Data



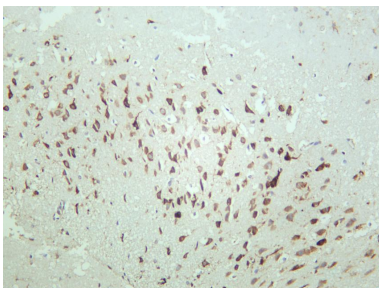
Lane 2: NIH-3T3 was treated with PDGF(100 ng/mL) for 10 minutes



Human brain was stained with anti-RPS6 (Phospho Ser240/Ser244) rabbit antibody



Mouse brain was stained with anti-RPS6 (Phospho Ser240/Ser244) rabbit antibody



Rat brain was stained with anti-RPS6 (Phospho Ser240/Ser244) rabbit antibody

For Research Use Only