

c-Jun (Phospho Ser63) Rabbit mAb (AR1591)

Key Features

Host Species:	Rabbit
Reactivity:	Human, Mouse, Rat
Applications:	WB, IHC, IF, IP, ELISA
Isotype:	IgG, Kappa
MW:	36kD (Calculated) 48kD (Observed)

Recommended Dilution Ratios

IHC:	1:100-500
WB:	1:2000-10000
IF:	1:200-1000
ELISA:	1:5000-20000
IP:	1:50-200

Storage

-15°C to -25°C/1 year (Do not lower than -25°C)

Basic Information

Clonality	Monoclonal
-----------	------------

Immunogen Information

Specificity	Phospho-AP-1 (S63) Antibody detects endogenous levels of AP-1 protein only when phosphorylated at S63. The name of modified sites may be influenced by many factors, such as species (the modified site was not originally found in human samples) and the change of protein sequence (the previous protein sequence is incomplete, and the protein sequence may be prolonged with the development of protein sequencing technology). When naming, we will use the "numbers" in historical reference to keep the sites consistent with the reports. The antibody binds to the following modification sequence (lowercase letters are modification sites): LTsPD
-------------	---

Target Information

Gene name	JUN
Protein Name	Transcription factor AP-1;jun;c-jun; AP-1

Organism	Gene ID	UniProt ID
Human	3725	P05412
Mouse	16476	P05627
Rat	24516	P17325

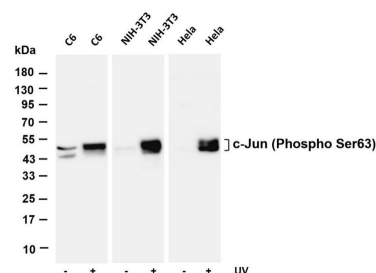
Cellular Localization

Nucleus.

Tissue specificity

Expressed in the developing and adult prostate and prostate cancer cells.

Validation Data



Various whole cell lysates were separated by 4-20% SDS-PAGE, and the membrane was blotted with anti-c-Jun (Phospho Ser63) antibody. The HRP conjugated Goat anti-Rabbit IgG(H + L) antibody was used to detect the antibody.

Lane 1: C6

Lane 2: C6 was treated with UV for 4 hours

Lane 3: NIH-3T3

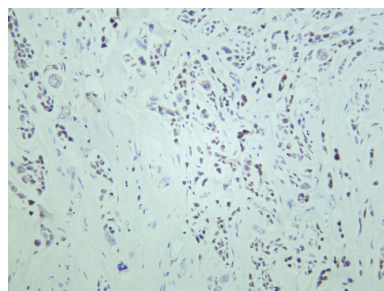
Lane 4: NIH-3T3 was treated with UV for 30 minutes then recover 30 minutes

Lane 5: HeLa

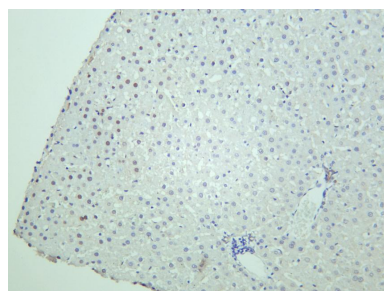
Lane 6: HeLa was treated with UV for 2 hours

Predicted band size: 36kDa

Observed band size: 48kDa



Human breast was stained with anti-c-Jun (Phospho Ser63) rabbit antibody



Rat liver was stained with anti-c-Jun (Phospho Ser63) rabbit antibody

For Research Use Only