

# SMAD5 (Phospho Ser463/Ser465) Rabbit mAb (AR1592)

## Key Features

Host Species:	Rabbit
Reactivity:	Human,Mouse,Rat
Applications:	WB,IHC,IF,IP,ELISA
Isotype:	IgG,Kappa
MW:	52kD (Calculated) 60kD (Observed)

## Recommended Dilution Ratios

IHC:	1:200-1000
WB:	1:2000-10000
IF:	1:200-1000
ELISA:	1:5000-20000
IP:	1:50-200

## Storage

-15°C to -25°C/1 year (Do not lower than -25°C)

## Basic Information

Clonality	Monoclonal
-----------	------------

## Immunogen Information

Specificity	Endogenous
-------------	------------

## Target Information

Gene name	SMAD5
Protein Name	Mothers against decapentaplegic homolog 5

Organism	Gene ID	UniProt ID
Human	4090	Q99717
Mouse		P97454
Rat	59328	Q9R1V3

Cellular Localization	Cytoplasm, Nucleus
Tissue specificity	Ubiquitous.

## Validation Data



Various whole cell lysates were separated by 4-20% SDS-PAGE, and the membrane was blotted with anti-SMAD5 (Phospho Ser463/Ser465) antibody. The HRP-conjugated Goat anti-Rabbit IgG(H + L) antibody was used to detect the antibody.

Lane 1: MCF7

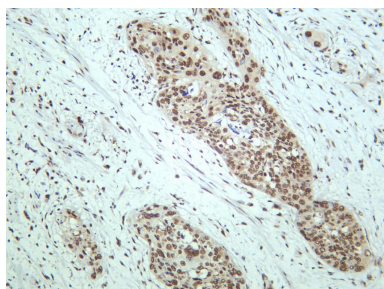
Lane 2: HeLa

Lane 3: NIH-3T3

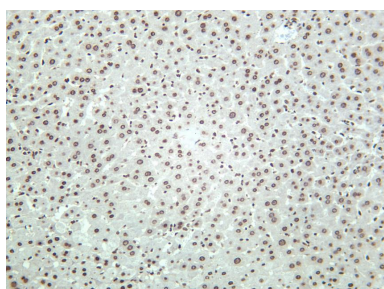
Lane 4: Rat womb

Predicted band size: 52kDa

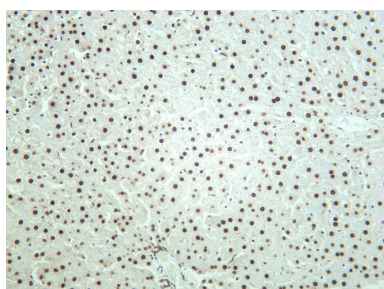
Observed band size: 60kDa



Human cervical carcinoma was stained with anti-SMAD5 (Phospho Ser463/Ser465) rabbit antibody



Mouse liver was stained with anti-SMAD5 (Phospho Ser463/Ser465) rabbit antibody



Rat liver was stained with anti-SMAD5 (Phospho Ser463/Ser465) rabbit antibody

For Research Use Only