

# Paxillin (Phospho Tyr118) Rabbit mAb (AR1593)

## Key Features

Host Species:	Rabbit
Reactivity:	Human, Mouse, Rat
Applications:	WB, IF, IP, ELISA
Isotype:	IgG, Kappa
MW:	65kD (Calculated) 65kD (Observed)

## Recommended Dilution Ratios

WB:	1:2000-10000
IF:	1:200-1000
ELISA:	1:5000-20000
IP:	1:50-200

## Storage

-15°C to -25°C/1 year (Do not lower than -25°C)

## Basic Information

Clonality	Monoclonal
-----------	------------

## Immunogen Information

Specificity	This antibody detects endogenous levels of Paxillin only when phosphorylated at Tyr118. This antibody does not recognize phosphorylated at other sites.
-------------	---

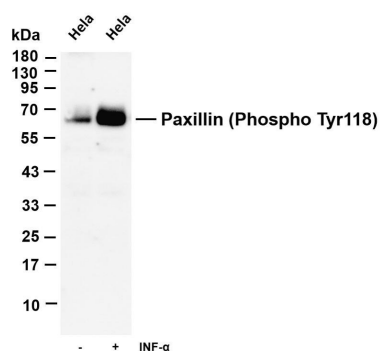
## Target Information

Gene name	PXN
Protein Name	Paxillin

Organism	Gene ID	UniProt ID
Human	5829	P49023
Mouse	19303	Q8VI36
Rat	360820	Q66H76

Cellular Localization	Cytoplasm, Nucleus
Tissue specificity	Brain, Epithelium, Lung, Placenta, T-cell, Uterus

## Validation Data



Various whole cell lysates were separated by 4-20% SDS-PAGE, and the membrane was blotted with anti-Paxillin (Phospho Tyr118) antibody. The HRP-conjugated Goat anti-Rabbit IgG(H + L) antibody was used to detect the antibody.

Lane 1: HeLa

Lane 2: HeLa Serum starvation for 4 hours then treated with EGF (200 ng/mL) for 15 minutes

Predicted band size: 65kDa

Observed band size: 65kDa

For Research Use Only