

p90RSK (phospho Ser380) Rabbit mAb (AR1596)

Key Features

| | |
|---------------|--------------------------------------|
| Host Species: | Rabbit |
| Reactivity: | Human, Mouse, Rat |
| Applications: | WB, IHC, IF, IP, ELISA |
| Isotype: | IgG, Kappa |
| MW: | 83kD (Calculated) 83kD (Observed) |

Recommended Dilution Ratios

| | |
|--------|--------------|
| IHC: | 1:2000-5000 |
| WB: | 1:2000-10000 |
| IF: | 1:200-1000 |
| ELISA: | 1:5000-20000 |
| IP: | 1:50-200 |

Storage

-15°C to -25°C/1 year (Do not lower than -25°C)

Basic Information

| | |
|-----------|------------|
| Clonality | Monoclonal |
|-----------|------------|

Immunogen Information

| | |
|-------------|--|
| Specificity | This antibody detects endogenous levels of Rsk-1 only when phosphorylated at Ser380. This antibody does not recognize phosphorylated at other sites. |
|-------------|--|

Target Information

| | |
|--------------|-------------------------------------|
| Gene name | RPS6KA1 |
| Protein Name | Ribosomal protein S6 kinase alpha-1 |

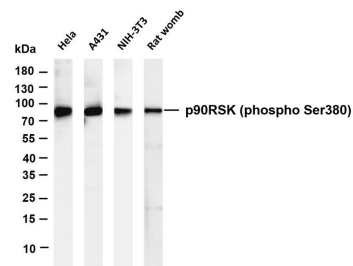
| Organism | Gene ID | UniProt ID |
|----------|---------|------------|
| Human | 6195 | Q15418 |
| Mouse | | P18653 |
| Rat | 81771 | Q63531 |

| | |
|-----------------------|--------------------|
| Cellular Localization | Cytoplasm, Nucleus |
|-----------------------|--------------------|

Tissue specificity

Colon, Epithelium

Validation Data



Various whole cell lysates were separated by 4-20% SDS-PAGE, and the membrane was blotted with anti-p90RSK (phospho Ser380) antibody. The HRP-conjugated Goat anti-Rabbit IgG(H + L) antibody was used to detect the antibody.

Lane 1: HeLa

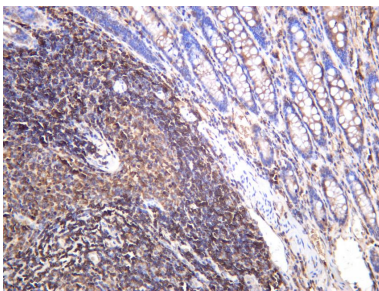
Lane 2: A431

Lane 3: NIH-3T3

Lane 4: Rat womb

Predicted band size: 83kDa

Observed band size: 83kDa



Human colon carcinoma was stained with anti-p90RSK (phospho Ser380) rabbit antibody

For Research Use Only