

p90RSK Rabbit mAb (AR1597)

Key Features

Host Species:	Rabbit
Reactivity:	Human, Mouse, Rat
Applications:	WB, IHC, IF, IP, ELISA
Isotype:	IgG, Kappa
MW:	83kD (Calculated) 83kD (Observed)

Recommended Dilution Ratios

IHC:	1:1000-4000
WB:	1:2000-10000
IF:	1:200-1000
ELISA:	1:5000-20000
IP:	1:50-200

Storage

-15°C to -25°C/1 year (Do not lower than -25°C)

Basic Information

Clonality	Monoclonal
-----------	------------

Immunogen Information

Specificity	Endogenous
-------------	------------

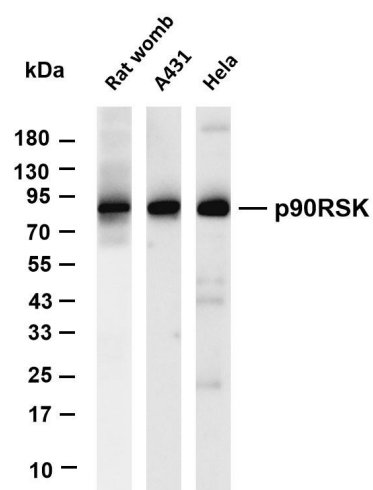
Target Information

Gene name	RPS6KA1
Protein Name	Ribosomal protein S6 kinase alpha-1

Organism	Gene ID	UniProt ID
Human	6195	Q15418
Mouse		P18653
Rat	81771	Q63531

Cellular Localization	Cytoplasm, Nucleus
Tissue specificity	Colon, Epithelium

Validation Data



Various whole cell lysates were separated by 4-20% SDS-PAGE, and the membrane was blotted with anti-p90RSK antibody. The HRP-conjugated Goat anti-Rabbit IgG(H + L) antibody was used to detect the antibody.

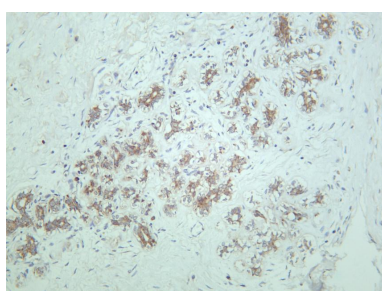
Lane 1: Rat womb

Lane 2: A431

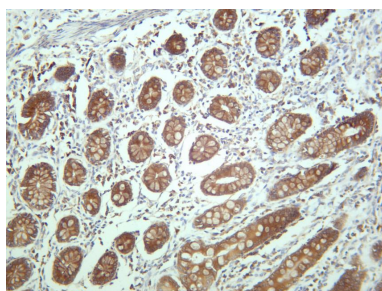
Lane 3: HeLa

Predicted band size: 83kDa

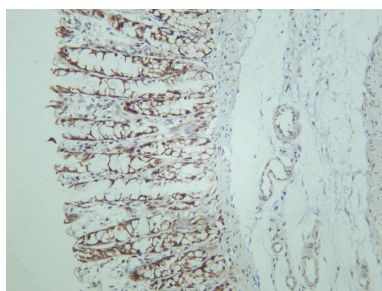
Observed band size: 83kDa



Human breast carcinoma was stained with anti-p90RSK rabbit antibody



Human colon was stained with anti-p90RSK rabbit antibody



Rat colon was stained with anti-p90RSK rabbit antibody

For Research Use Only