

M6A Rabbit pAb (AR20001)

Key Features

Host Species:	Rabbit
Reactivity:	Human, Mouse, Rat
Applications:	WB, ELISA
Isotype:	IgG
MW:	31kD (Calculated) 31kD (Observed)

Recommended Dilution Ratios

WB:	1:500-2000
ELISA:	1:5000

1:5000 Not yet tested in other applications.

Storage -15°C to -25°C/1 year (Do not lower than -25°C)

Basic Information

Clonality	Polyclonal
-----------	------------

Immunogen Information

Specificity	M6A Polyclonal Antibody detects endogenous levels of M6A protein.
-------------	---

Target Information

Gene name	GPM6A
Protein Name	Neuronal membrane glycoprotein M6-a

Organism	Gene ID	UniProt ID
Human	2823	P51674
Mouse	234267	P35802
Rat	306439	Q812E9

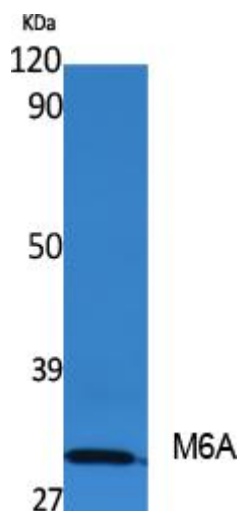
Cellular Localization	Cell membrane ; Multi-pass membrane protein . Cell projection, axon . Cell projection, growth cone . Cell projection, dendritic spine . Cell projection, filopodium . Cell projection, neuron projection . Localizes to cholesterol-rich lipid rafts of the plasma membrane of hippocampal neurons. Localized to plasma membrane of cell bodies and neurites of hippocampal neurons. Localized in membrane protrusions (filopodia and
-----------------------	---

spines) of primary hippocampal neurons (By similarity). Localized to the growth cone edge membrane of elongating axons (By similarity).

Tissue specificity

Brain, Brain cortex, Fetal brain, Spinal cord

Validation Data



Western Blot analysis of extracts from rat stomach, using M6A Polyclonal Antibody. Secondary antibody was diluted at 1:20000

For Research Use Only