

Vimentin Rabbit mAb (AR1600)

Key Features

Host Species:	Rabbit
Reactivity:	Human, Mouse, Rat
Applications:	WB, IHC, IF, IP, ELISA
Isotype:	IgG, Kappa
MW:	54kD (Calculated) 54kD (Observed)

Recommended Dilution Ratios

IHC:	1:1000-5000
WB:	1:1000-5000
IF:	1:200-1000
ELISA:	1:5000-20000
IP:	1:50-200

Storage

-15°C to -25°C/1 year (Do not lower than -25°C)

Basic Information

Clonality	Monoclonal
-----------	------------

Immunogen Information

Specificity	Endogenous
-------------	------------

Target Information

Gene name	VIM
-----------	-----

Protein Name	Vimentin
--------------	----------

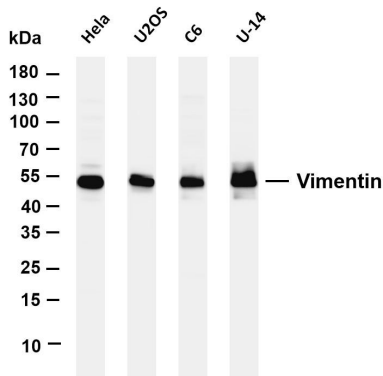
Organism	Gene ID	UniProt ID
Human	7431	P08670
Mouse	22352	P20152
Rat	81818	P31000

Cellular Localization	Cytoplasm
-----------------------	-----------

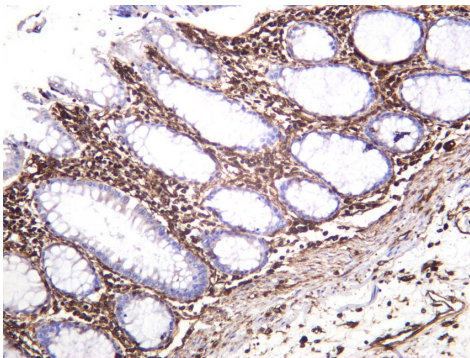
Tissue specificity	Highly expressed in fibroblasts, some expression in T- and B-lymphocytes, and little or no expression in Burkitt's lymphoma cell
--------------------	--

lines. Expressed in many hormone-independent mammary carcinoma cell lines.

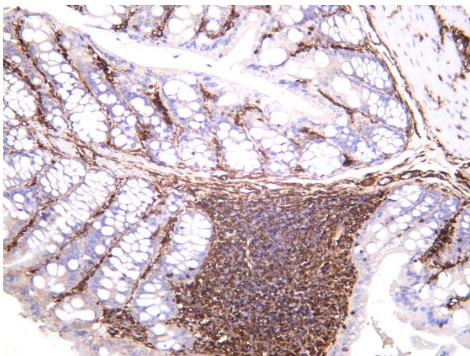
Validation Data



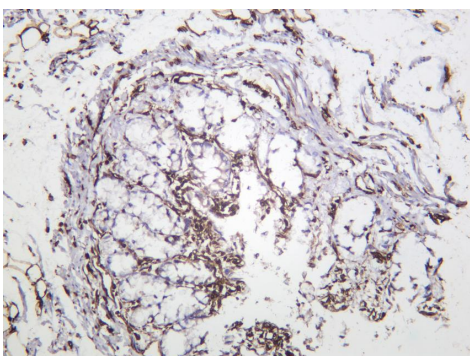
Various whole cell lysates were separated by 4-20% SDS-PAGE, and the membrane was blotted with anti-Vimentin antibody. The HRP-conjugated Goat anti-Rabbit IgG(H + L) antibody was used to detect the antibody. Lane 1: HeLa Lane 2: U2OS Lane 3: C6 Lane 4: U-14 Predicted band size: 54kDa Observed band size: 54kDa



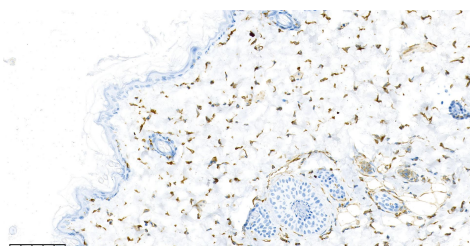
Human colon was stained with anti-Vimentin rabbit antibody



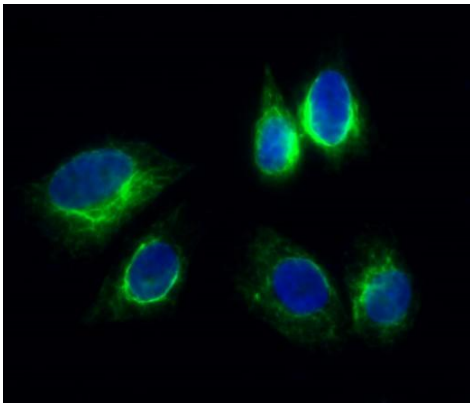
Mouse colon was stained with anti-Vimentin rabbit antibody



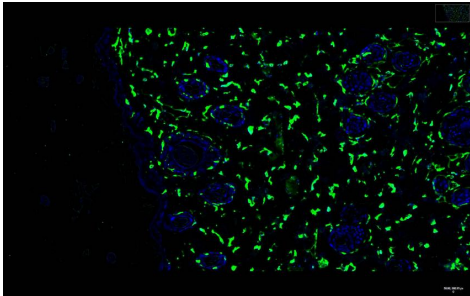
Rat colon was stained with anti-Vimentin rabbit antibody



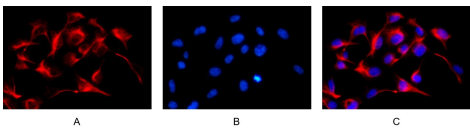
Rat skin was stained with anti-Vimentin Rabbit antibody



Immunofluorescence analysis of HeLa cell. 1,Vimentin Antibody(green) was diluted at 1:200(4° overnight). 2, Goat Anti Rabbit Alexa Fluor 488 was diluted at 1:1000(room temperature, 50min). 3 DAPI(blue) 10min.



Rat skin was stained with anti-Vimentin Rabbit antibody



Immunofluorescence analysis of HEK293. Picture A: Vimentin antibody (red). Picture B: DAPI (blue). Picture C: Merge of A+B

For Research Use Only