

MEK Kinase-3 Rabbit pAb (AR20033)

Key Features

Host Species:	Rabbit
Reactivity:	Human, Mouse
Applications:	WB, IHC, IF, ELISA
Isotype:	IgG
MW:	71kD (Calculated) 71kD (Observed)

Recommended Dilution Ratios

WB:	1:500-2000
IHC:	1:100-300
IF:	1:200-1000
ELISA:	1: 20000
Storage	-15°C to -25°C/1 year (Do not lower than -25°C)

Basic Information

Clonality	Polyclonal
-----------	------------

Immunogen Information

Specificity	MEK Kinase-3 Polyclonal Antibody detects endogenous levels of MEK Kinase-3 protein.
-------------	---

Target Information

Gene name	MAP3K3
Protein Name	Mitogen-activated protein kinase 3

Organism	Gene ID	UniProt ID
Human	4215	Q99759
Mouse	26406	Q61084

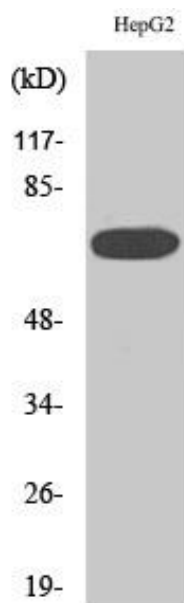
Cellular Localization

cytoplasm, cytosol

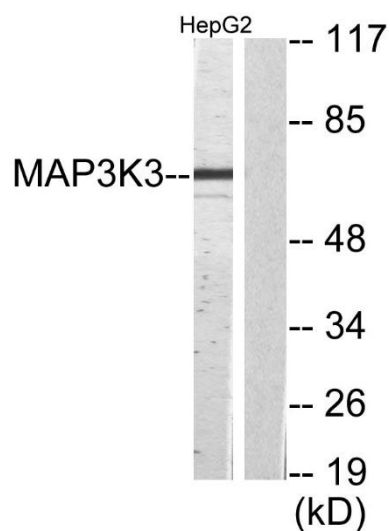
Tissue specificity

Aorta, Brain, Epithelium, Kidney, Melanoma, Placenta, PNS

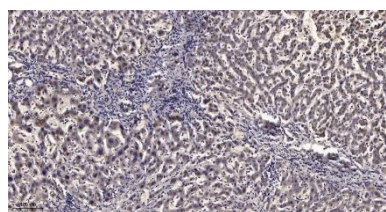
Validation Data



Western Blot analysis of various cells using MEK Kinase-3 Polyclonal Antibody diluted at 1:2000



Western blot analysis of lysates from HepG2 cells, using MAP3K3 Antibody. The lane on the right is blocked with the synthesized peptide.



Immunohistochemical analysis of paraffin-embedded human liver cancer.

1. Antibody was diluted at 1:200(4° overnight).
2. Tris-EDTA, pH9.0 was used for antigen retrieval.
3. Secondary antibody was diluted at 1:200(room temperature, 45min).

For Research Use Only