

PINK1 Rabbit mAb (AR1526)

Key Features

Host Species:	Rabbit
Reactivity:	Human,Mouse,Rat
Applications:	WB,IF,IP,ELISA
Isotype:	IgG,Kappa
MW:	63kD (Calculated) 63kD (Observed)

Recommended Dilution Ratios

WB:	1:2000-10000
IF:	1:200-1000
ELISA:	1:5000-20000
IP:	1:50-200

Storage

-15°C to -25°C/1 year (Do not lower than -25°C)

Basic Information

Clonality	Monoclonal
-----------	------------

Immunogen Information

Specificity	Endogenous
-------------	------------

Target Information

Gene name	PINK1
Protein Name	Serine/threonine-protein kinase PINK1, mitochondrial (BRPK) (PTEN-induced putative kinase protein 1)

Organism	Gene ID	UniProt ID
Human	65018	Q9BXM7
Mouse		Q99MQ3

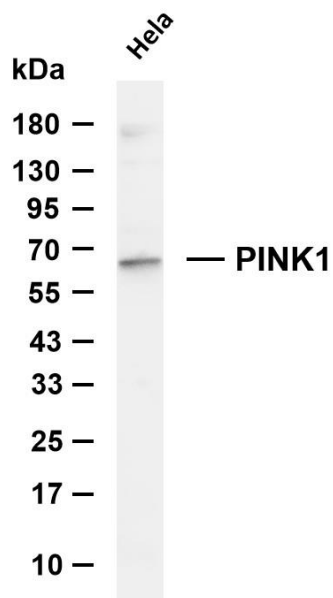
Cellular Localization

Mitochondrion outer membrane; Single-pass membrane protein.
Mitochondrion inner membrane; Single-pass membrane protein.
Cytoplasm, cytosol. Localizes mostly in mitochondrion and the two smaller proteolytic processed fragments localize mainly in cytosol (PubMed:19229105). When mitochondria lose mitochondrial membrane potential following damage, PINK1 import is arrested,

Tissue specificity

which induces its accumulation in the outer mitochondrial membrane, where it acquires kinase activity (PubMed:18957282). Highly expressed in heart, skeletal muscle and testis, and at lower levels in brain, placenta, liver, kidney, pancreas, prostate, ovary and small intestine. Present in the embryonic testis from an early stage of development.

Validation Data



Various whole cell lysates were separated by 4-20% SDS-PAGE, and the membrane was blotted with anti-PINK1 antibody. The HRP-conjugated Goat anti-Rabbit IgG (H + L) antibody was used to detect the antibody.

Lane 1: HeLa

Predicted band size: 63kDa

Observed band size: 63kDa

For Research Use Only