

PIM3 Rabbit pAb(AR20036)

Key Features

Host Species:	Rabbit
Reactivity:	Human, Mouse, Rat
Applications:	WB,IHC
Isotype:	IgG
MW:	36kD (Calculated)

Recommended Dilution Ratios

WB:	1:500-2000
IHC:	1:50-300

Storage

-15°C to -25°C/1 year (Do not lower than -25°C)

Basic Information

Clonality	Polyclonal
-----------	------------

Immunogen Information

Specificity	This antibody detects endogenous levels of PIM3 at Human/Mouse/Rat
-------------	--

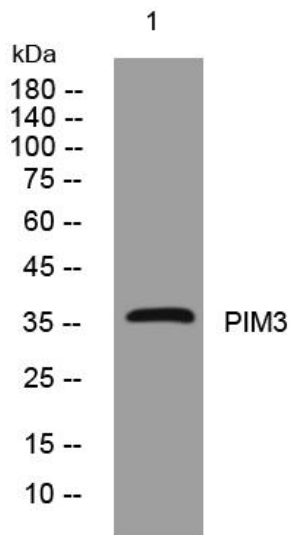
Target Information

Gene name	PIM3
Protein Name	PIM3

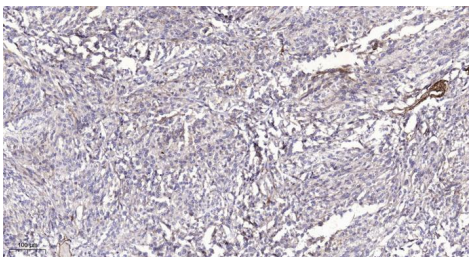
Organism	Gene ID	UniProt ID
Human	415116	Q86V86
Mouse	223775	P58750
Rat	64534	O70444

Cellular Localization	Cytoplasm . Detected in various tissues, including the heart, brain, lung, kidney, spleen, placenta, skeletal muscle, and peripheral blood leukocytes. Not found or barely expressed in the normal adult endoderm-derived organs such as colon, thymus, liver, or small intestine. However, expression is augmented in premalignant and malignant lesions of these organs.
Tissue specificity	

Validation Data



Western blot analysis of lysates from Hela cells, primary antibody was diluted at 1:1000, 4° over night



Immunohistochemical analysis of paraffin-embedded human Colon cancer. 1, Antibody was diluted at 1:200(4° overnight). 2, Tris-EDTA, pH9.0 was used for antigen retrieval. 3, Secondary antibody was diluted at 1:200(room temperature, 45min).

For Research Use Only