

## CD81 Rabbit mAb (AR1601)

### Key Features

Host Species:	Rabbit
Reactivity:	Human, Mouse, Rat
Applications:	WB, IHC, IF, IP, ELISA
Isotype:	IgG, Kappa
MW:	26kD (Calculated) 22kD (Observed)

### Recommended Dilution Ratios

IHC:	1:200-1000
WB:	1:2000-10000
IF:	1:200-1000
ELISA:	1:5000-20000
IP:	1:50-200

### Storage

-15°C to -25°C/1 year (Do not lower than -25°C)

### Basic Information

Clonality	Monoclonal
-----------	------------

### Immunogen Information

Specificity	Endogenous
-------------	------------

### Target Information

Gene name	CD81
Protein Name	CD81 antigen

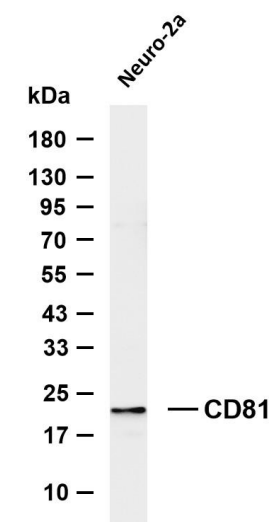
Organism	Gene ID	UniProt ID
Human	975	P60033
Mouse	12520	P35762
Rat	25621	Q62745

Cellular Localization	Cell membrane ; Multi-pass membrane protein . Basolateral cell membrane ; Multi-pass membrane protein . Associates with CLDN1 and the CLDN1-CD81 complex localizes to the basolateral cell membrane. .
-----------------------	--

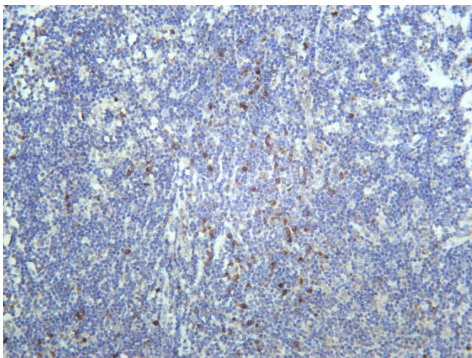
Tissue specificity

Expressed on B cells (at protein level) (PubMed:20237408).  
Expressed in hepatocytes (at protein level) (PubMed:12483205).  
Expressed in monocytes/macrophages (at protein level) (PubMed:12796480).  
Expressed on both naive and memory CD4-positive T cells (at protein level) (PubMed:22307619).

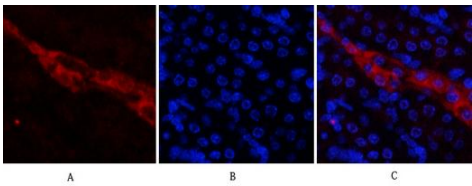
Validation Data



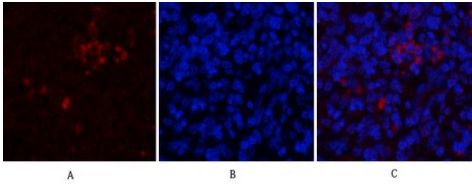
Various whole cell lysates were separated by 4-20% SDS-PAGE, and the membrane was blotted with anti-CD81 antibody. The HRP-conjugated Goat anti-Rabbit IgG (H + L) antibody was used to detect the antibody. Lane 1: Neuro-2a Predicted band size: 26kDa  
Observed band size: 22kDa



Human tonsil was stained with anti-CD81 Rabbit antibody



Immunofluorescence analysis of mouse-kidney tissue. 1,CD81 Monoclonal Antibody(red) was diluted at 1:200(4°C,overnight). 2, Cy3 labeled Secondary antibody was diluted at 1:300(room temperature, 50min).3, Picture B: DAPI(blue) 10min. Picture A:Target. Picture B: DAPI. Picture C: merge of A+B



Immunofluorescence analysis of rat-spleen tissue. 1,CD81 Monoclonal Antibody(red) was diluted at 1:200(4°C,overnight). 2, Cy3 labeled Secondary antibody was diluted at 1:300(room temperature, 50min).3, Picture B: DAPI(blue) 10min. Picture A:Target. Picture B: DAPI. Picture C: merge of A+B