

FoxJ1 Rabbit pAb (AR20039)

Key Features

Host Species:	Rabbit
Reactivity:	Human, Mouse, Rat
Applications:	WB, IHC, IF, ELISA
Isotype:	IgG
MW:	60kD (Observed)

Recommended Dilution Ratios

WB:	1:500-2000
IHC:	1:100-1:300
ELISA:	1:20000
IF:	1:50-200

Storage

-15°C to -25°C/1 year (Do not lower than -25°C)

Basic Information

Clonality	Polyclonal
-----------	------------

Immunogen Information

Specificity	FoxJ1 Polyclonal Antibody detects endogenous levels of FoxJ1 protein.
-------------	---

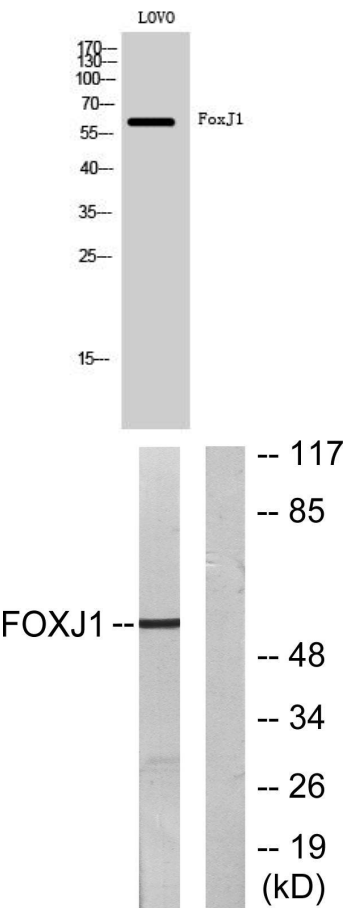
Target Information

Gene name	FOXJ1
Protein Name	Forkhead box protein J1

Organism	Gene ID	UniProt ID
Human	2302	Q92949
Mouse	15223	Q61660
Rat	116557	Q63247

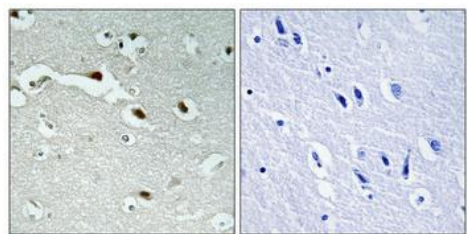
Cellular Localization	Nucleus .
Tissue specificity	Testis, oviduct, lung and brain cortex

Validation Data



Western Blot analysis of LOVO cells using FoxJ1 Polyclonal Antibody cells nucleus extracted by Minute TM Cytoplasmic and Nuclear Fractionation kit (SC-003,Inventbiotech,MN,USA).

Western blot analysis of lysates from LOVO cells, using FOXJ1 Antibody. The lane on the right is blocked with the synthesized peptide.



Immunohistochemical analysis of paraffin-embedded Human brain. Antibody was diluted at 1:100(4° overnight). High-pressure and temperature Tris EDTA,pH8.0 was used for antigen retrieval. Negative contrl (right) obtaned from antibody was pre-absorbed by immunogen peptide

For Research Use Only