

Cytokeratin 8 (ABT536) Mouse mAb (AM10009)

Key Features

Host Species:	Mouse
Reactivity:	Human, Mouse, Rat
Applications:	IHC, ELISA
Isotype:	IgG2a,Kappa
MW:	54kD (Calculated) 54kD (Observed)

Recommended Dilution Ratios

IHC:	1:200-400
ELISA	1:500-5000

Storage -15°C to -25°C/1 year (Do not lower than -25°C)

Basic Information

Clonality	Monoclonal
-----------	------------

Immunogen Information

Specificity	The antibody can specifically recognize human CK8 protein, and shows no cross reaction with CK1, 4, 5, 6, 7, 10, 15, 16, 17, 18, 20.
-------------	--

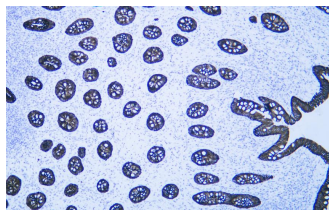
Target Information

Gene name	KRT8 CYK8
Protein Name	CARD2;CK 8;CK-8;CK8;CYK8;CYKER;Cytokeratin endo A;Cytokeratin-8;DreK8;EndoA;K2C8;K2C8_HUMAN;K8;Keratin 8;Keratin type II cytoskeletal 8;Keratin, type II cytoskeletal 8;Keratin-8;KO;Krt 2.8;KRT8;MGC118110;MGC174782;MGC53564;MGC85764;sb:cb186;Type-II keratin Kb8

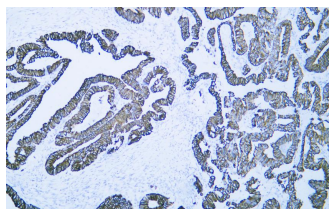
Organism	Gene ID	UniProt ID
Human	3856	P05787
Mouse	16691	P11679
Rat	25626	Q10758

Cellular Localization	Cytoplasm . Nucleus, nucleoplasm . Nucleus matrix .
Tissue specificity	Observed in muscle fibers accumulating in the costameres of myoplasm at the sarcolemma membrane in structures that contain dystrophin and spectrin. Expressed in gingival mucosa and hard palate of the oral cavity.

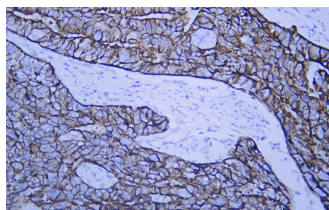
Validation Data



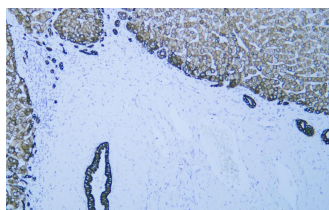
Human appendix tissue was stained with Anti-Cytokeratin 8 (ABT536) Antibody



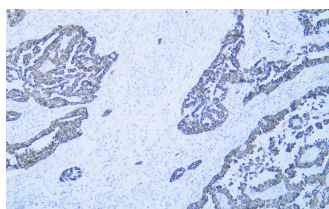
Human colon carcinoma tissue was stained with Anti-Cytokeratin 8 (ABT536) Antibody



Human gastric adenocarcinoma tissue was stained with Anti-Cytokeratin 8 (ABT536) Antibody



Human liver tissue was stained with Anti-Cytokeratin 8 (ABT536) Antibody



Human lung adenocarcinoma tissue was stained with Anti-Cytokeratin 8 (ABT536) Antibody

For Research Use Only