

ITGB6 Rabbit mAb (AR1231)

Key Features

Host Species:	Rabbit
Reactivity:	Human,Mouse,Rat
Applications:	WB,IHC,IF,IP,ELISA
Isotype:	IgG,Kappa
MW:	86kD (Calculated) 86kD (Observed)

Recommended Dilution Ratios

IHC:	1:2000-10000
WB:	1:1000-5000
IF:	1:200-1000
ELISA:	1:5000-20000
IP:	1:50-200

Storage

-15°C to -25°C/1 year (Do not lower than -25°C)

Basic Information

Clonality	Monoclonal
-----------	------------

Immunogen Information

Specificity	Endogenous
-------------	------------

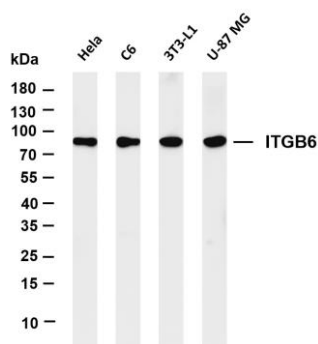
Target Information

Gene name	ITGB6
Protein Name	Integrin beta-6

Organism	Gene ID	UniProt ID
Human	3694	P18564;
Mouse		Q9Z0T9
Rat		Q6AYF4

Cellular Localization	Membrane
Tissue specificity	Keratinocyte,Pancreas,Skeletal muscle

Validation Data



Various whole cell lysates were separated by 4-20% SDS-PAGE, and the membrane was blotted with anti-ITGB6 antibody. The HRP conjugated Goat anti-Rabbit IgG(H + L) antibody was used to detect the antibody.

Lane 1: HeLa

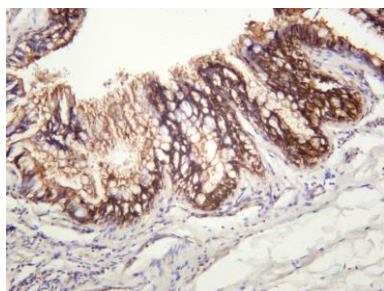
Lane 2: C6

Lane 3: 3T3-L1

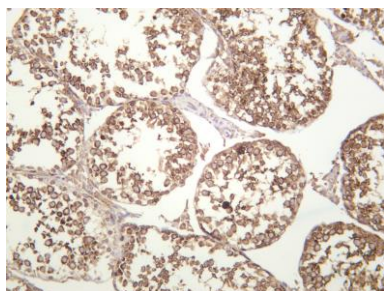
Lane 4: U-87 MG

Predicted band size: 86kDa

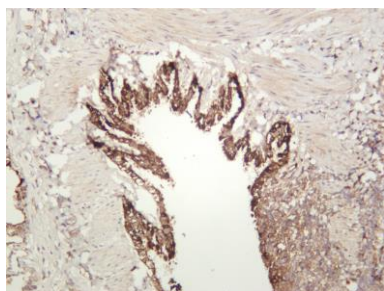
Observed band size: 86kDa



Human colon carcinoma was stained with anti-ITGB6 rabbit antibody



Mouse testis was stained with anti-ITGB6 rabbit antibody



Rat lung was stained with anti-ITGB6 rabbit antibody

For Research Use Only