

## PRKACA Rabbit mAb(AR1239)

### Key Features

|               |                                      |
|---------------|--------------------------------------|
| Host Species: | Rabbit                               |
| Reactivity:   | Human,Mouse,Rat                      |
| Applications: | WB,IHC,IF,IP,ELISA                   |
| Isotype:      | IgG,Kappa                            |
| MW:           | 40kD (Calculated)<br>40kD (Observed) |

### Recommended Dilution Ratios

|        |              |
|--------|--------------|
| IHC:   | 1:2000-10000 |
| WB:    | 1:1000-5000  |
| IF:    | 1:200-1000   |
| ELISA: | 1:5000-20000 |
| IP:    | 1:50-200     |

### Storage

-15°C to -25°C/1 year (Do not lower than -25°C)

### Basic Information

|           |            |
|-----------|------------|
| Clonality | Monoclonal |
|-----------|------------|

### Immunogen Information

|             |            |
|-------------|------------|
| Specificity | Endogenous |
|-------------|------------|

### Target Information

|              |   |
|--------------|---|
| Gene name    | PRKACA  |
| Protein Name | cAMP-dependent protein kinase catalytic subunit alpha |

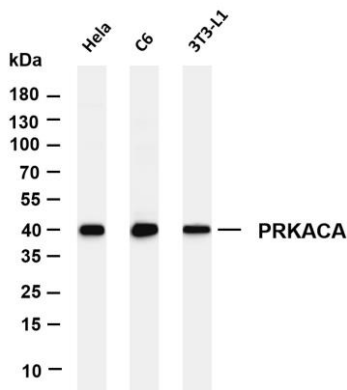
| Organism | Gene ID | UniProt ID |
|----------|---------|------------|
| Human    | 5566    | P17612     |
| Mouse    | 18747   | P05132     |
| Rat      |         | P27791     |

|                       |                     |
|-----------------------|---------------------|
| Cellular Localization | Cytoplasm, Membrane |
|-----------------------|---------------------|

|                    |   |
|--------------------|---|
| Tissue specificity | Isoform 1 is ubiquitous. Isoform 2 is sperm-specific and is enriched in pachytene |
|--------------------|---|

spermatocytes but is not detected in round spermatids.

## Validation Data



Various whole cell lysates were separated by 4-20% SDS-PAGE, and the membrane was blotted with anti-PRKACA antibody. The HRPconjugated Goat anti-Rabbit IgG(H + L) antibody was used to detect the antibody.

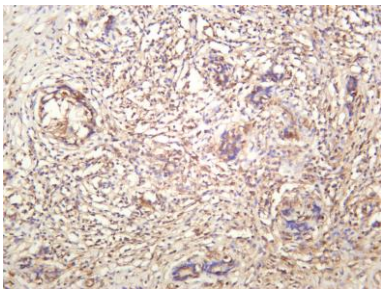
Lane 1: HeLa

Lane 2: C6

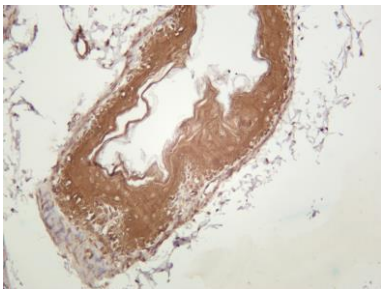
Lane 3: 3T3-L1

Predicted band size: 40kDa

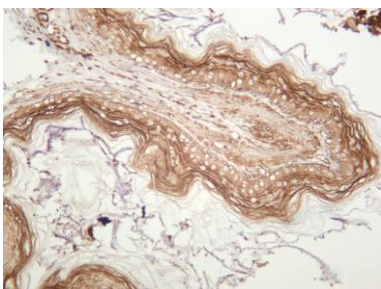
Observed band size: 40kDa



Human thyroid carcinoma was stained with anti-PRKACA rabbit antibody



Mouse stomach was stained with anti-PRKACA rabbit antibody



Rat stomach was stained with anti-PRKACA rabbit antibody

For Research Use Only