

ACACA Rabbit mAb (AR1300)

Key Features

Host Species:	Rabbit
Reactivity:	Human, Mouse, Rat
Applications:	WB, IHC, IF, IP, ELISA
Isotype:	IgG, Kappa
MW:	265kD (Calculated) 265kD (Observed)

Recommended Dilution Ratios

IHC:	1:1000-4000
WB:	1:2000-10000
IF:	1:200-1000
ELISA:	1:5000-20000
IP:	1:50-200

Storage

-15°C to -25°C/1 year (Do not lower than -25°C)

Basic Information

Clonality	Monoclonal
-----------	------------

Immunogen Information

Specificity	Endogenous
-------------	------------

Target Information

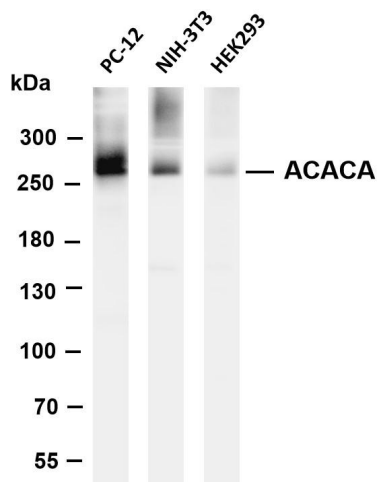
Gene name	ACACA
Protein Name	Acetyl-CoA carboxylase 1; ACC1; Acetyl-Coenzyme A carboxylase alpha; ACC-alpha;

Organism	Gene ID	UniProt ID
Human	31	Q13085
Mouse	107476	Q5SWU9
Rat	60581	P11497

Cellular Localization	Cytoplasm, cytosol.
Tissue specificity	Expressed in brain, placenta, skeletal muscle, renal, pancreatic and adipose tissues; expressed at low level in pulmonary tissue; not

detected in the liver.

Validation Data



Various whole cell lysates were separated by 4-8% SDS-PAGE, and the membrane was blotted with anti-ACACA antibody. The HRP-conjugated Goat anti-Rabbit IgG(H + L) antibody was used to detect the antibody.

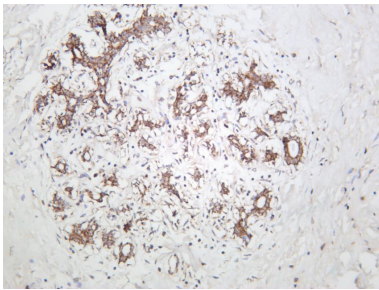
Lane 1: PC-12

Lane 2: NIH-3T3

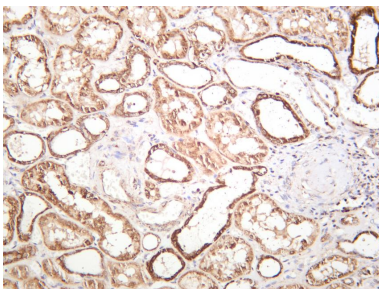
Lane 3: HEK293

Predicted band size: 265kDa

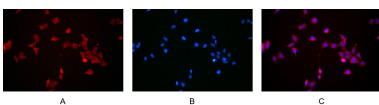
Observed band size: 265kDa



Human breast carcinoma was stained with anti-ACACA rabbit antibody



Human kidney was stained with anti-ACACA rabbit antibody



Immunofluorescence analysis of HEK293.

Picture A: ACACA antibody (red).

Picture B: DAPI (blue).

Picture C: Merge of A+B

For Research Use Only